

2023 Annual.
CNC ROTARY TABLE
**Product
Catalog**


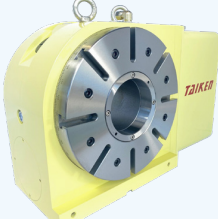
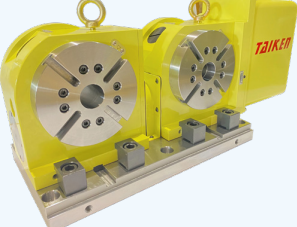
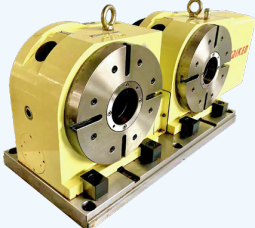
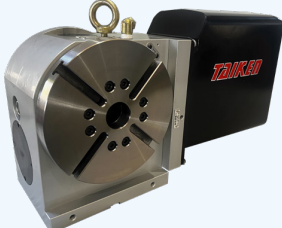
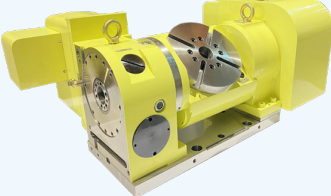
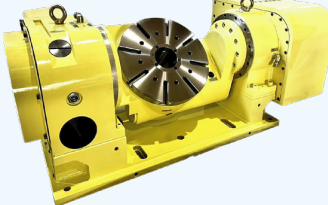


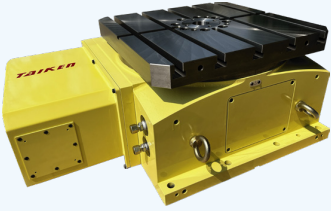
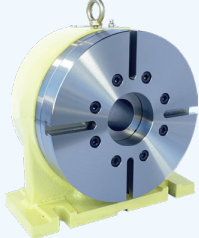
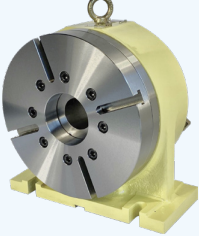
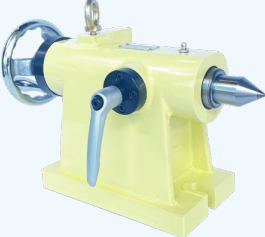
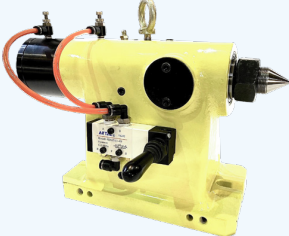

SUPER
TAIKEN

TAIKEN Precision Technology co., Ltd
SINCE 2007

<http://www.supertaiken.com.tw>

CATALOG

ITEM	MODEL	PAGE
TKA Series - Pneumatic Brake		TKA - 90 TKA - 125 TKA - 170 TKA - 210
TCH Series - Hydraulic Brake		TKH - 210 TCH - 500 TCH - 255 TCH - 630 TCH - 320 TCH - 800 TCH - 400
2-Wheel Coupled Pneumatic Brake (TKA-2W Series)		TKA-125-2W TKA-170-2W TKA-210-2W
2-Wheel Coupled Hydraulic Brake (TCH-2W Series)		TCH-255-2W
Roller Gear Rotary Table CNC		TCR - 170 TCR - 210 TCR - 255 TCR - 320
TKFA Series - Pneumatic Brake		TKFA - 125 TKFA - 170 TKFA - 210 TKFH - 210
TCFH Series - Hydraulic Brake		TCFH - 255 TCFH - 320 TCFH - 400 TCFH - 500

ITEM	MODEL	PAGE
CNC Hirth Coupling Index Table CNC (TGH Series)		TGH - 500 TGH - 630 TGH - 800
TPAR Series - Pneumatic Rotary Tailstock		TKAR - 125 TPAR - 170 TPAR - 210
TCHR Series - Hydraulic Rotary Tailstock		TPHR - 255 TCHR - 320 TCHR - 400 TCHR - 630
T Series - Manual Tailstock		TA - 110 TB - 135 TC - 160 TD - 210 TK - 310
AT Series - Manual Tailstock with Pneumatic Switching Valve		ATF - 110 ATG - 135
HT Series - Manual Tailstock with Hydraulic Switching Valve		HTC - 160 HTD - 210

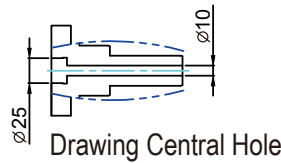
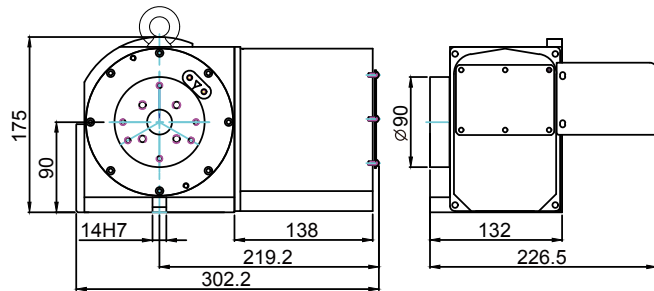
TKA SERIES - PNEUMATIC BRAKE

TKA - 90 / TKA - 125 / TKA - 170 / TKA - 210

TKA - 90

Vertical

Horizontal

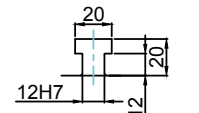
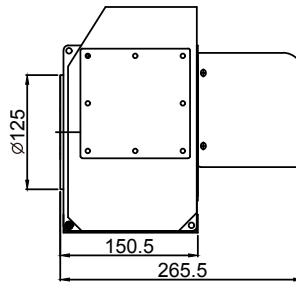
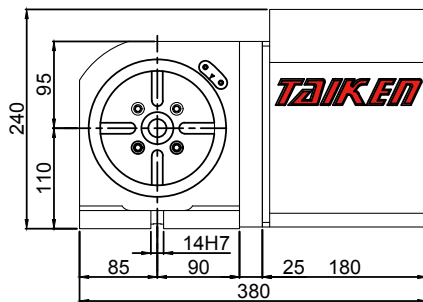


Model	Unit	TKA-90	TKA-125	TKA-170	TKA-210	
Table Diameter	mm	∅90	∅125	∅170	∅210	
Diameter of Table Central Hole	mm	∅25H7	∅35H7	∅40H7	∅40H7	
Diameter of Canter Through Hole	mm	∅10	∅20	∅40	∅40	
Center Height (Vertical)	mm	90	110	135	160	
Table Height (Horizontal)	mm	132	150.5	153.8	153.8	
Table T-slot Width	mm	-	12H7	12H7	12H7	
Guide Block Width	mm	14h7	14h7	18h7	18h7	
Min. Increment	deg.	0.001	0.001	0.001	0.001	
Indexing Precision	arc.sec.	60	40	20	20	
Repeatability	arc.sec.	4	4	4	4	
Clamping System(Pressure)	kg/cm ²	5-7	5-7	5-7	5-7	
Clamping Torque	kg-m	8	12	31	31	
Servo Motor Model	FANUC	Taper shaft	-	α2is/B4is	α4i/α8i/B8is	α4i/α8i/B8is
	MITSUBISHI	Straight	HF-KP23	HF-75/105	HF-104	HF-104
	YASKAWA		SGM7J-04A	SGM7A-08A	SGM7G-09A	SGM7G-09A
Speed Reduction Ratio	-	1:40	1:60	1:90	1:90	
Max. Rotation Rota of Table	rpm	75	83.3	44.4	44.4	
Allowable Inertia Load Capacity(Horizontal)	kg.cm.sec ²	2	2	5.4	8.3	
Allowable Workpiece Load	Vertical	kg	25	50	75	75
	With Tailstock	kg	50	100	150	150
	Horizontal	kg	50	100	150	150
Allowable Load (With Rotary Table Clamping)		kgf	600	1000	1450	1450
		kgf.m	60	45	100	100
		kgf.m	9	13	31	31
Strength of Worm Gears	kg.m	5	9	18	18	
Net Weight (Servo Motor Excluded)	kg	30	46	59	61	

* The specification and design are subject to change without prior notice.

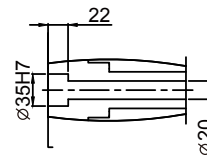
DESCRIPTION

TKA - 125



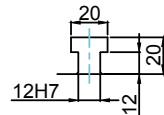
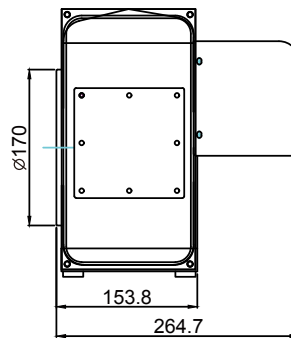
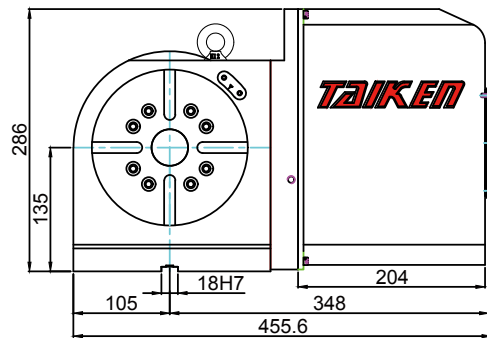
T-Slot Dimension

S=2:1



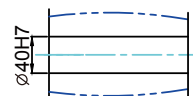
Drawing Central Hole

TKA - 170



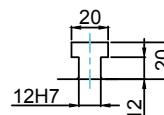
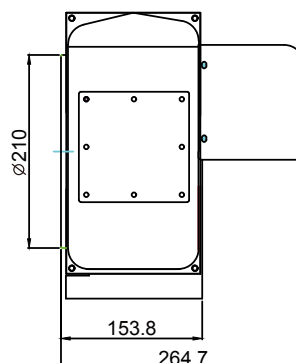
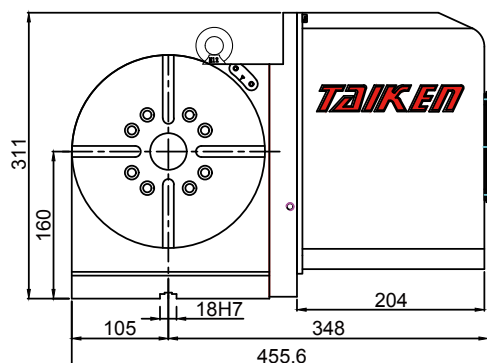
T-Slot Dimension

S=2:1



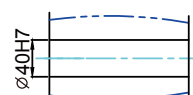
Drawing Central Hole

TKA - 210



T-Slot Dimension

S=2:1



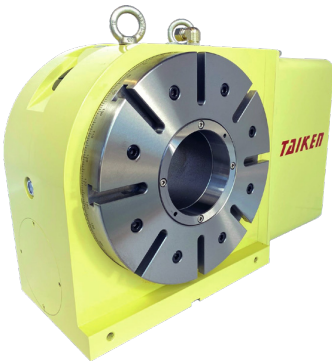
Drawing Central Hole

TCH SERIES - HYDRAULIC BRAKE

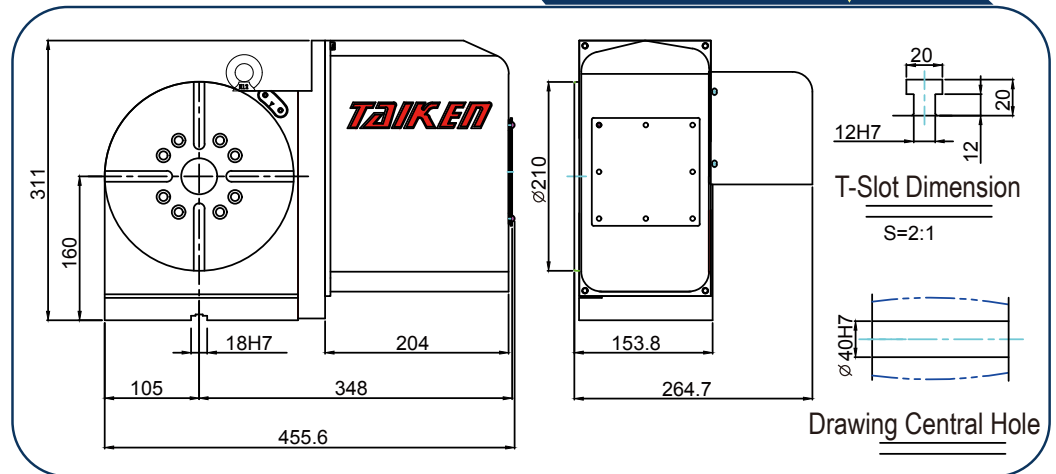
TKH - 210 / TCH - 255 / TCH - 320 / TCH - 400

↕ Vertical

↔ Horizontal



TKH - 210 ↕ ↔

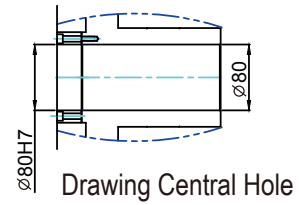
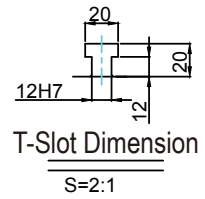
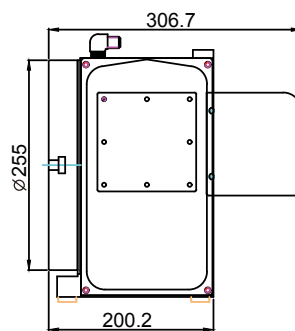
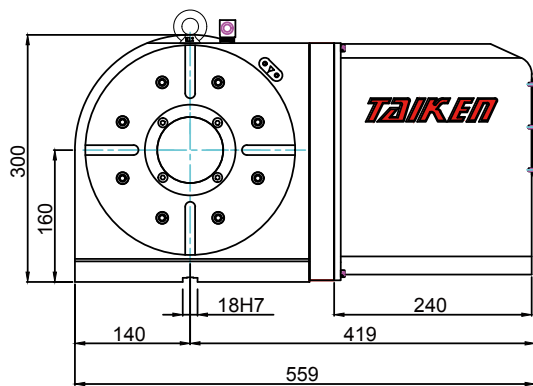


Model	Unit	TKH-210	TCH-255	TCH-320	TCH-400	
Table Diameter	mm	$\varnothing 210$	$\varnothing 255$	$\varnothing 320$	$\varnothing 400$	
Diameter of Table Central Hole	mm	$\varnothing 40$	$\varnothing 110$	$\varnothing 150$	$\varnothing 150$	
Inner Diameter of Mandrel Sleeve	mm	-	$\varnothing 80H7$	$\varnothing 120H7$	$\varnothing 120H7$	
Diameter of Canter Through Hole	mm	$\varnothing 40$	$\varnothing 80$	$\varnothing 120$	$\varnothing 120$	
Center Height (Vertical)	mm	160	160	210	255	
Table Height (Horizontal)	mm	153.8	200.2	240.2	250.3	
Table T-slot Width	mm	12H7	12H7	14H7	14H7	
Guide Block Width	mm	18h7	18h7	18h7	18h7	
Min. Increment	deg.	0.001	0.001	0.001	0.001	
Indexing Precision	arc.sec.	20	15	15	15	
Repeatability	arc.sec.	4	4	4	4	
Clamping System(Hydraulic)	kg/cm ²	20	35	35	35	
Clamping Torque	kg-m	35	70	115	200	
Servo Motor Model	FANUC	Taper shaft	$\alpha 4is/B8is$	$\alpha 8is/B8is$	$\alpha 12is/B22is$	$\alpha 12is/B22is$
	MITSUBISHI	Straight	HF-104	HF-104/154	HF-204	HF-204
Speed Reduction Ratio	-	1:90	1:120	1:120	1:120	
Max. Rotation Rota of Table (Calcalat With FANUC α Motor)	rpm	33.3	25	25	25	
Allowable Inertia Load Capacity(Horizontal)	kg.cm.sec ²	8.3	20.3	44.8	44.8	
Allowable Workpiece Load	Vertical	kg	75	100	150	200
	With Tailstock	kg	150	250	350	370
	Horizontal	kg	150	250	350	500
Allowable Load (With Rotary Table Clamping)		kgf	1450	2000	3000	4000
		kgf.m	100	112	300	400
		kgf.m	35	70	115	200
Strength of Worm Gears	kg.m	18	55	80	170	
Net Weight (Servo Motor Excluded)	kg	61	108	196	283	

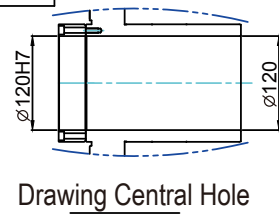
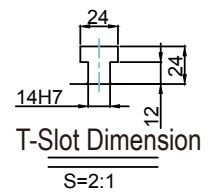
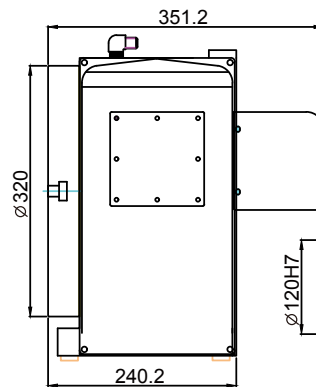
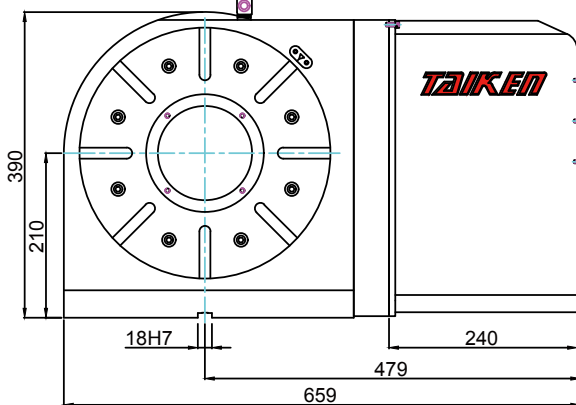
* The specification and design are subject to change without prior notice.

DESCRIPTION

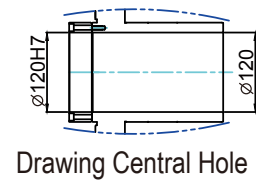
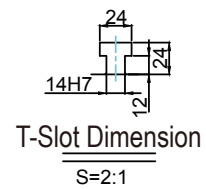
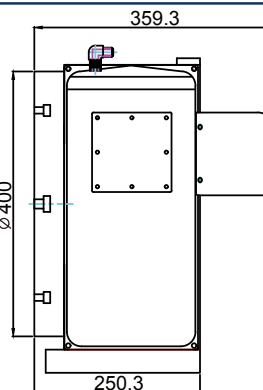
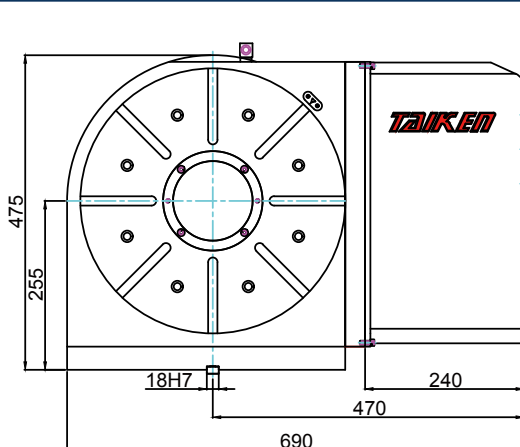
TKH - 255



TKH - 320



TKH - 400



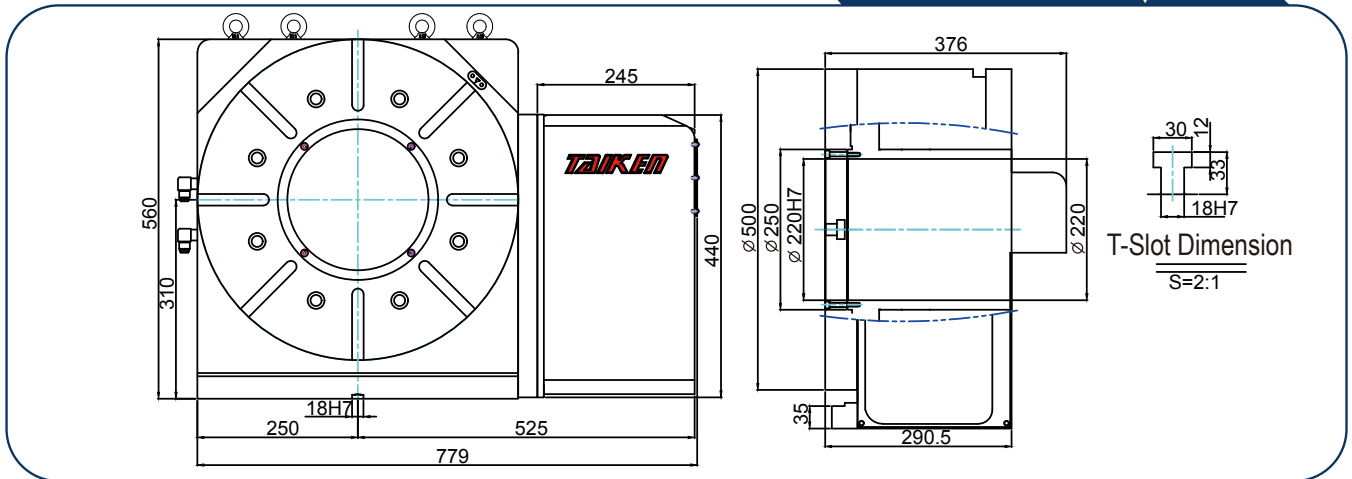
TCH SERIES - HYDRAULIC BRAKE

TCH - 500 / TCH - 630 / TCH - 800

Vertical

Horizontal

TKH - 500

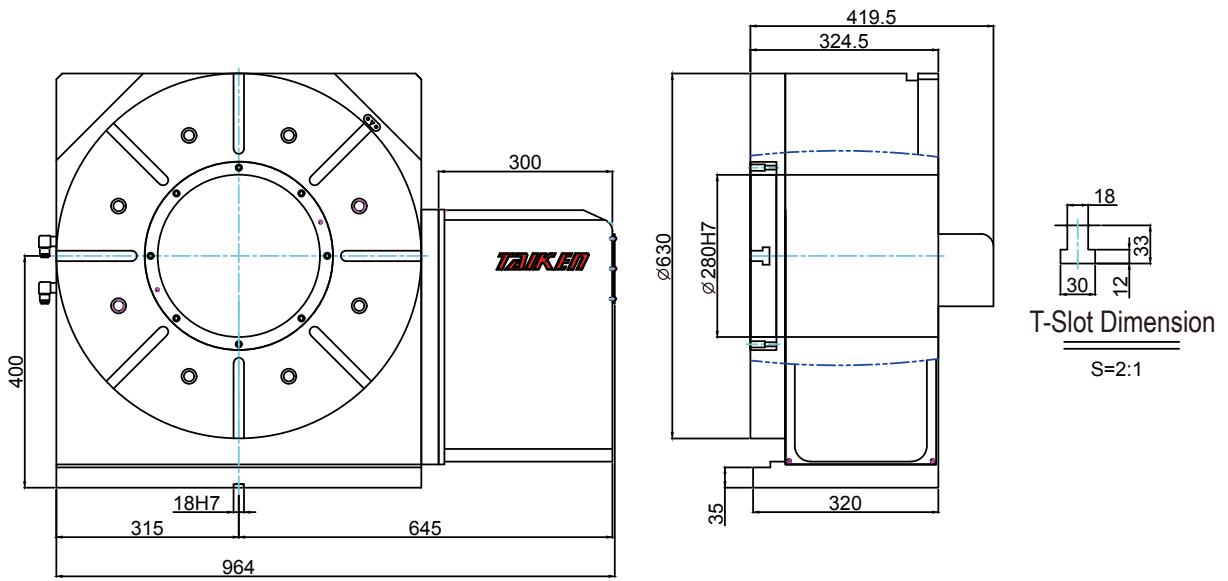


Model	Unit	TCH-500	TCH-630	TCH-800	
Table Diameter	mm	∅500	∅630	∅800	
Diameter of Table Central Hole	mm	∅250	∅325	∅395	
Inner Diameter of Mandrel Sleeve	mm	∅220H7	∅280H7	∅350H7	
Diameter of Canter Through Hole	mm	∅220	∅280	∅350	
Center Height (Vertical)	mm	310	400	470	
Table Height (Horizontal)	mm	290.5	324.5	350	
Table T-slot Width	mm	18H7	18H7	18H7	
Guide Block Width	mm	18h7	18h7	18h7	
Min. Increment	deg.	0.001	0.001	0.001	
Indexing Precision	arc.sec.	15	15	15	
Repeatability	arc.sec.	4	4	4	
Clamping System(Hydraulic)	kg/cm ²	35	35	35	
Clamping Torque	kg-m	370	800	800	
Servo Motor Model	FANUC	Taper shaft	α12is/β22is	α12is/β22is	α22i
	MITSUBISHI	Straight	HF-204	HF-204	HF-354
Speed Reduction Ratio	-	1:180	1:180	1:180	
Max. Rotation Rota of Table (Calcalat With FANUC α Motor)	rpm	16.6	16.6	11.1	
Allowable Inertia Load Capacity(Horizontal)	kg.cm.sec ²	187.5	396.9	1200	
Allowable Workpiece Load	Vertical	kg	250	400	800
	With Tailstock	kg	600	800	1500
	Horizontal	kg	600	800	1500
Allowable Load (With Rotary Table Clamping)		kgf	4000	5000	5000
		kgf.m	500	850	1000
		kgf.m	370	800	800
Strength of Worm Gears	kg.m	250	420	800	
Net Weight (Servo Motor Excluded)	kg	400	700	999	

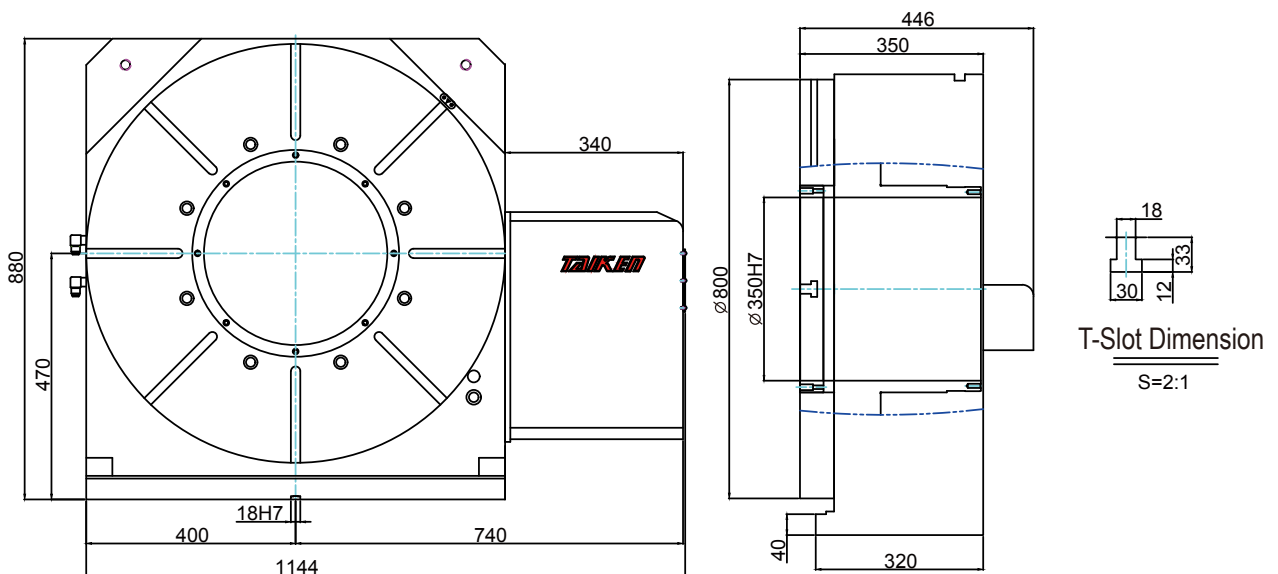
* The specification and design are subject to change without prior notice.

DESCRIPTION

TKH - 630



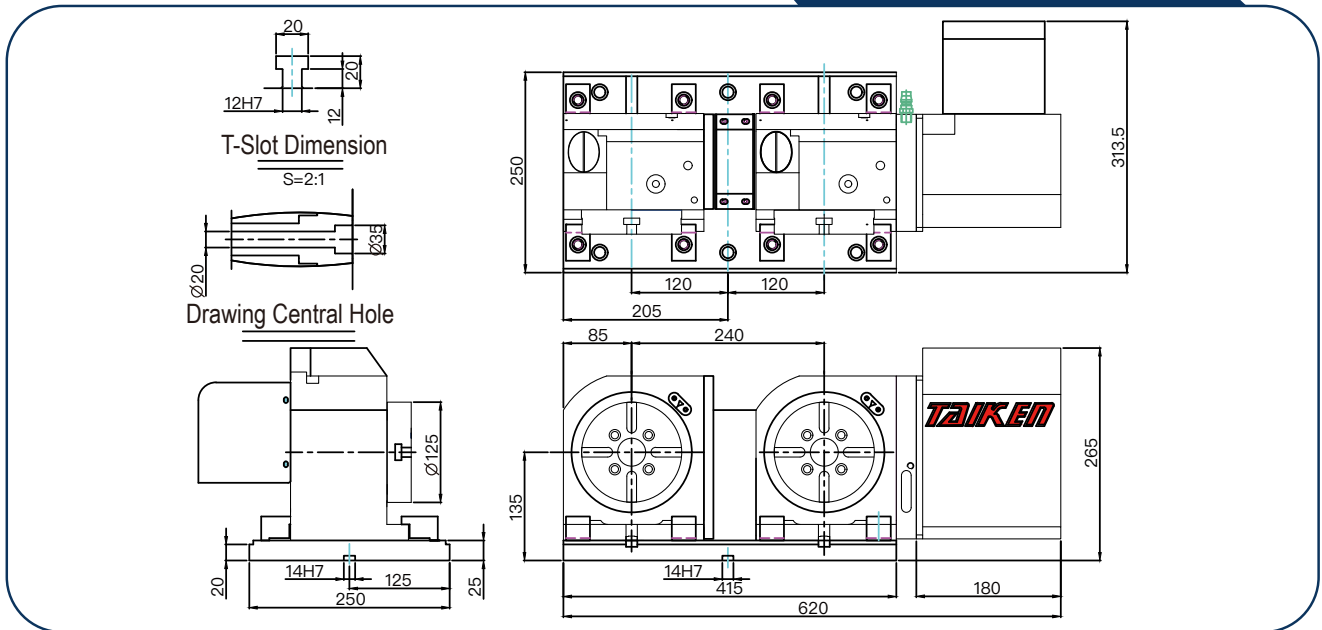
TKH - 800



2-WHEEL COUPLED PNEUMATIC BRAKE (TKA-2W SERIES)

TKA-125-2W / TKA-170-2W / TKA-210-2W

TKA-125-2W

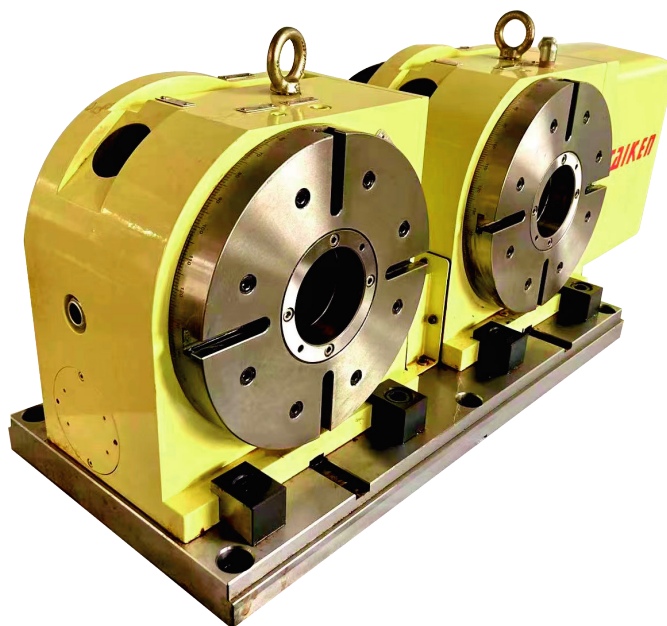


Model	Unit	TKA-125-2W	TKA-170-2W	TKA-210-2W	
Table Diameter	mm	∅125	∅170	∅210	
Diameter of Table Central Hole	mm	∅35H7	∅40H7	∅40H7	
Diameter of Center Through Hole	mm	∅20	∅40	∅40	
Center Height (Vertical)	mm	110	135	160	
Minimum distance between table centers	mm	240	265	265	
Table T-slot Width	mm	12H7	12H7	12H7	
Center Height (Vertical)	mm	135	175	200	
Min. Increment	deg.	0.001	0.001	0.001	
Indexing Precision	arc.sec.	40	20	20	
Repeatability	arc.sec.	4	4	4	
Clamping System(Pressure)	kg/cm ²	5-7	5-7	5-7	
Clamping Torque	kg-m	13	31	31	
Servo Motor Model	FANUC	Taper shaft	ciF4/βiS8	ciF4/βiS8	ciF4/βiS8
	MITSUBISHI	Straight	HF-75	HF-104/154	HF-104/154
	YASKAWA		SGM7G-08A	SGM7G-09A	SGM7G-09A
Speed Reduction Ratio	-	1:60	1:90	1:90	
Max. Rotation Rate of Table	rpm	83.3	44.4	44.4	
Allowable Inertia Load Capacity	kg.cm.sec ²	2	5.4	5.4	
Allowable Workpiece Load	Vertical	kg	50	75	75
	Horizontal	kg	100	150	150
Allowable Load (With Rotary Table Clamping)		kgf	1000	1450	1450
		kgf.m	45	100	100
		kgf.m	13	31	31
Strength of Worm Gears	kgf.m	9	18	18	
Net Weight (Servo Motor Excluded)	kg	82	150	180	

※ The specification and design are subject to change without prior notice.

2-WHEEL COUPLED HYDRAULIC BRAKE (TCH-2W SERIES)

TCH-255-2W

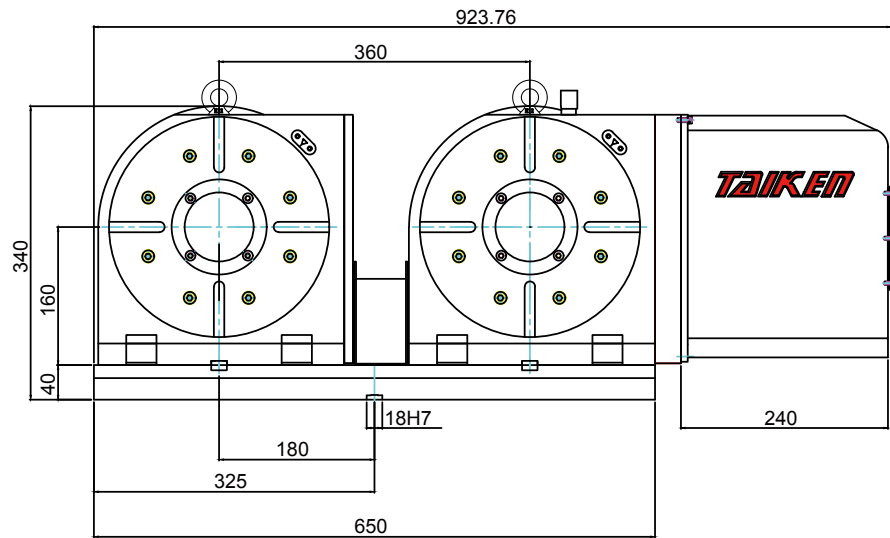
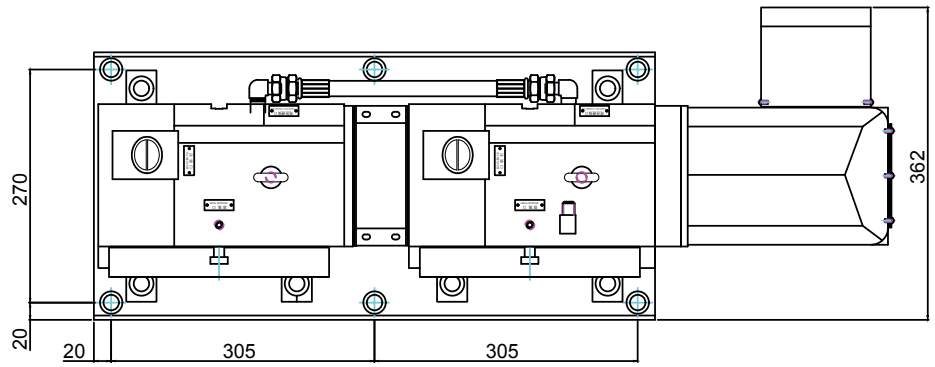
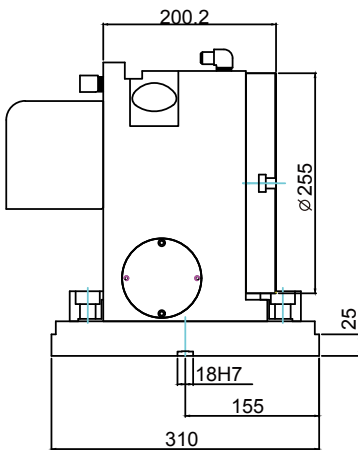
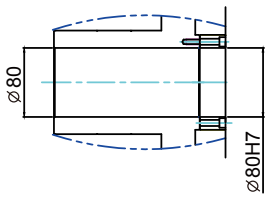
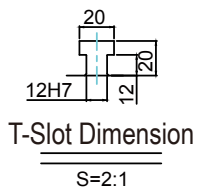


Model		Unit	TCH-255-2W
Table Diameter		mm	∅255
Diameter of Table Central Hole		mm	∅110
Diameter of Canter Through Hole		mm	∅80H7
Center Height (Vertical)		mm	160
Minimum distance between tale centers		mm	360
Table T-slot Width		mm	12H7
Center Height (Vertical)		mm	18h7
Min. Increment		deg.	0.001
Indexing Precision		arc.sec.	15
Repeatability		arc.sec.	4
Clamping System(Hydraulic)		kg/cm ²	35
Clamping Torque		kg-m	60
Servo Motor Model	FANUC	Taper shaft	∅4i/∅8is
	MITSUBISHI	Straight	HF-104/154
Speed Reduction Ratio		-	1:120
Max. Rotation Rota of Table		rpm	33.3
Allowable Inertia Load Capacity		kg.cm.sec ²	20.3
Allowable Workpiece Load	Vertical	kg	110
	Horizontal	kg	260
Allowable Load (With Rotary Table Clamping)		kgf	2000
		kgf.m	112
		kgf.m	70
Strength of Worm Gears		kgf.m	55
Net Weight (Servo Motor Excluded)		kg	250

※ The specification and design are subject to change without prior notice.

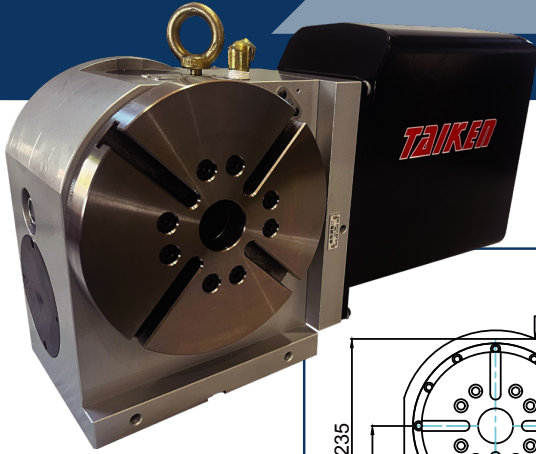
DESCRIPTION

TCH-255-2W

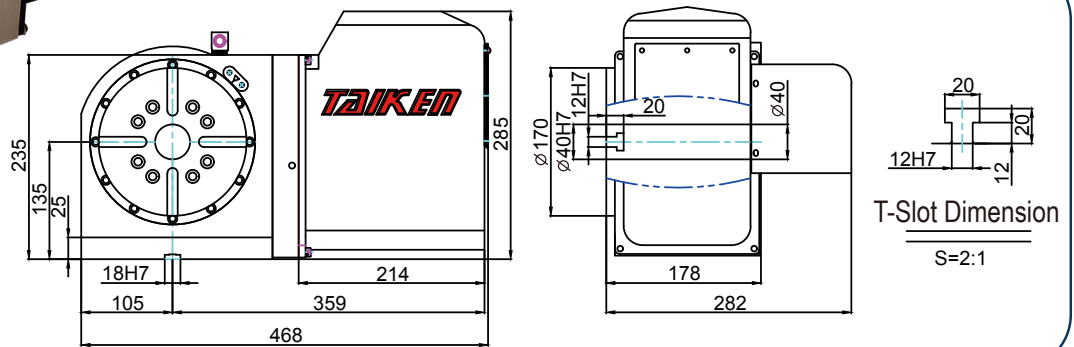


ROLLER GEAR ROTARY TABLE CNC

TCR - 170 / TCR - 210 / TCR - 255 / TCR - 320



TCR - 170

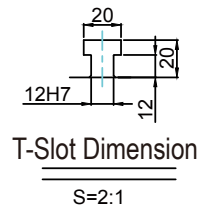
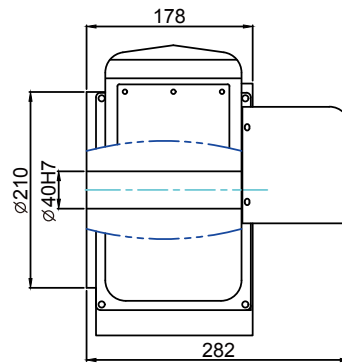
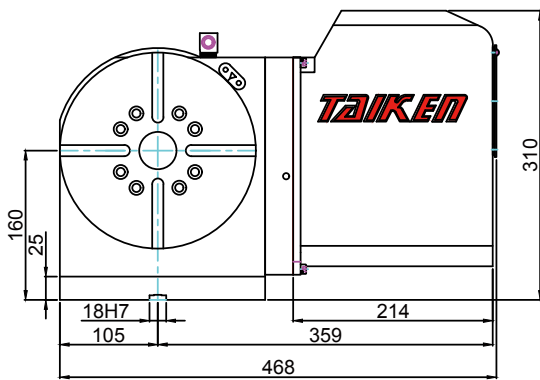


Model	Unit	TCR-170	TCR-210	TCR-255	TCR-320	
Table Diameter	mm	∅170	∅210	∅255	∅320	
Diameter of Table Central Hole	mm	∅40H7	∅40H7	∅110	∅150	
Inner Diameter of Mandrel Sleeve	mm	-	-	∅80H7	∅120H7	
Diameter of Canter Through Hole	mm	∅40	∅40	∅80	∅120	
Center Height (Vertical)	mm	135	160	160	210	
Table Height (Horizontal)	mm	178	178	200.2	240.2	
Table T-slot Width	mm	12H7	12H7	12H7	14H7	
Guide Block Width	mm	18h7	18h7	18h7	18h7	
Min. Increment	deg.	0.001	0.001	0.001	0.001	
Indexing Precision	arc.sec.	20	20	15	15	
Repeatability	arc.sec.	4	4	4	4	
Clamping System(Hydraulic)	kg/cm ²	35	35	35	35	
Clamping Torque	kg-m	50	50	70	115	
Servo Motor Model	FANUC	Taper shaft	α4is/β8is	α4is/β8is	α8i/β12is	α12i/β22is
	MITSUBISHI	Straight	HF-104/154	HF-104/154	HF-104/154	HF-204
Speed Reduction Ratio	-	1:36	1:36	1:60	1:60	
Max. Rotation Rota of Table	rpm	66.6	66.6	40	40	
Allowable Inertia Load Capacity(Horizontal)	kg.cm.sec ²	5.4	8.3	20.3	44.8	
Allowable Workpiece Load	Vertical 	kg	75	75	110	150
	With Tailstock	kg	150	150	250	350
	Horizontal 	kg	150	150	250	350
Allowable Load (With Rotary Table Clamping)		kgf	1450	1450	2000	3000
		kgf.m	100	100	112	300
		kgf.m	31	31	70	115
Strength of Worm Gears	kg.m	14	14	35	80	
Net Weight (Servo Motor Excluded)	kg	59	61	110	196	

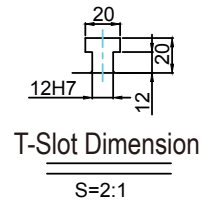
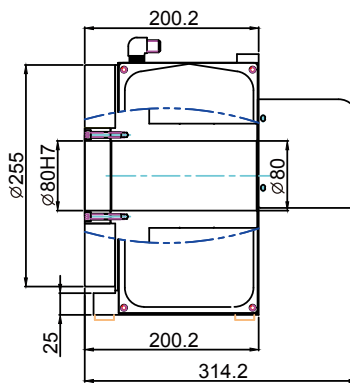
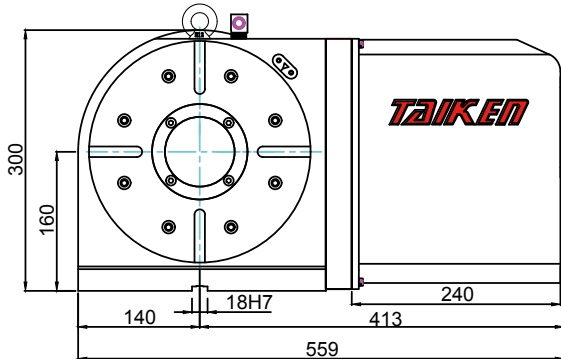
* The specification and design are subject to change without prior notice.

DESCRIPTION

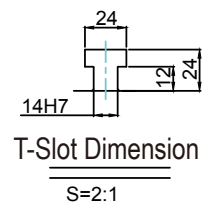
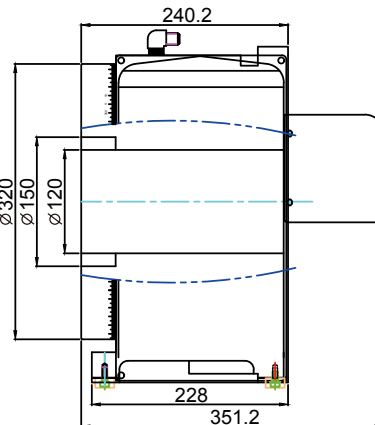
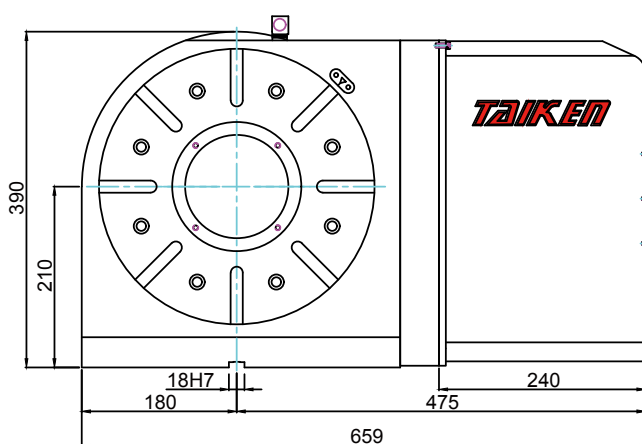
TCR - 210



TCR - 255



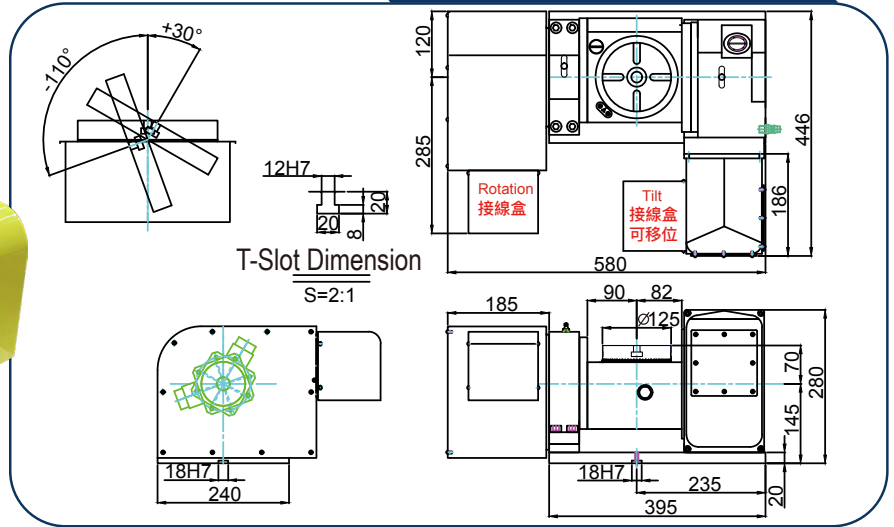
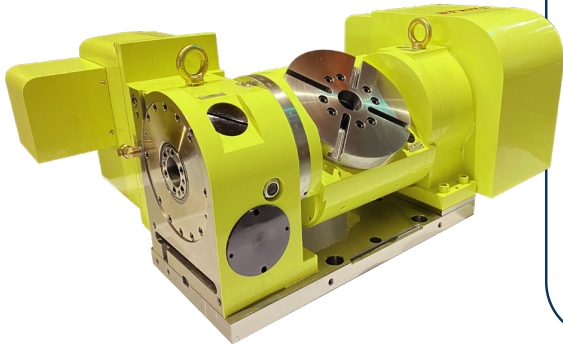
TCR - 320



TKFA SERIES - PNEUMATIC BRAKE

TKFA - 125 / TKFA - 170 / TKFA - 210 / TKFH - 210

TKFA-125

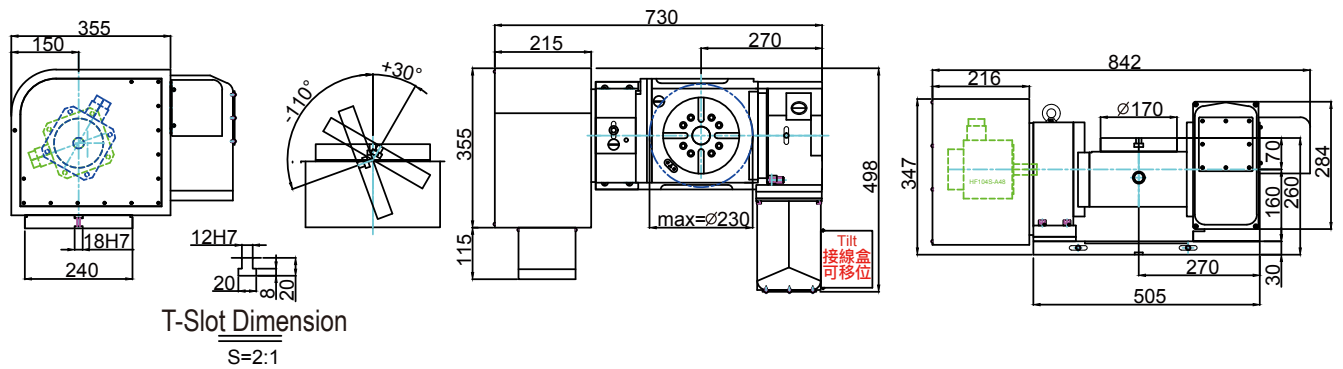


Model		Unit	TKFA-125		TKFA-170		TKFA-210		TKFH-210	
Table Diameter		mm	∅125		∅170		∅210		∅210	
Diameter of Table Central Hole		mm	∅35H7		∅40H7		∅40H7		∅40H7	
Diameter of Canter Through Hole		mm	∅20		∅40		∅40		∅40	
Table Height (Horizontal)		mm	215		260		260		280	
Table T-slot Width		mm	12H7		12H7		12H7		12H7	
Table Height		mm	14h7		18h7		18h7		18h7	
Tilt Range		.deg	+30° ~ -110°		+30° ~ -110°		+30° ~ -110°		+30° ~ -110°	
Axis			Rotation	Tilt	Rotation	Tilt	Rotation	Tilt	Rotation	Tilt
Min. Increment		.deg	0.001	0.001	0.001	0.001	0.001	0.001	0.001	0.001
Indexing Precision		arc.sec.	40	50	20	50	20	50	20	60
Repeatability		arc.sec.	6	8	6	8	6	8	6	8
Clamping System(Pressure/Hydraulic)		kg/cm	5~7	20(Hydraulic)	5~7	20(Hydraulic)	5~7	20(Hydraulic)	35(Hydraulic)	35(Hydraulic)
Clamping Torque		kg-m	13	26	18	26	18	26	18	26
Servo Motor Model	FANUC	Taper shaft	α2i/β4iS	α4i/β8iS	α2i/β4iS	α4i/β8iS	α2i/β4iS	α4i/β8iS	βiS8(Straight)	βiS8(Straight)
	MITSUBISHI	Straight	HF-75	HF-104	HF-104	HF-154	HF-104	HF-154	HF-104	HF-154
Speed Reduction Ratio		-	1:60	1:90	1:90	1:90	1:90	1:90	1:36	1:36
Max. Rotation Rota of Table (Calculate With FANUC α Motor)		rpm	44.4	33.3	33.3	33.3	33.3	33.3	83.3	83.3
Allowable Inertia Load Capacity		kg.cm.sec ²	0.97		4.13		4.13		4.13	
Allowable Workpiece Load	Vertical	kg	50		75		75		75	
	Horizontal	kg	35		50		50		50	
Allowable Load (With Rotary Table Clamping)		kgf	400		750		750		750	
		kgf.m	31		31		31		31	
		kgf.m	13		31		31		31	
Strength of Worm Gears		kg.m	9		18		18		18	
Net Weight (Servo Motor Excluded)		kg	100		175		180		220	

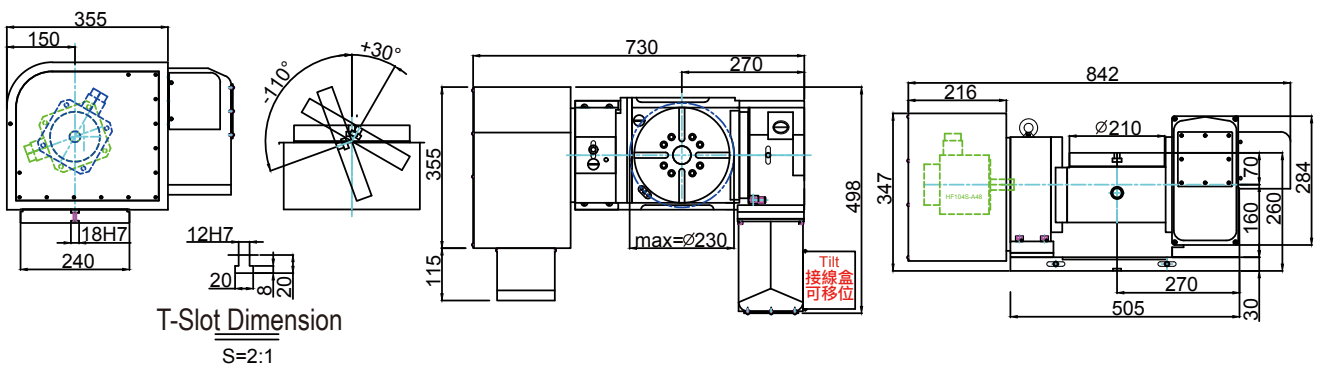
* The specification and design are subject to change without prior notice.

DESCRIPTION

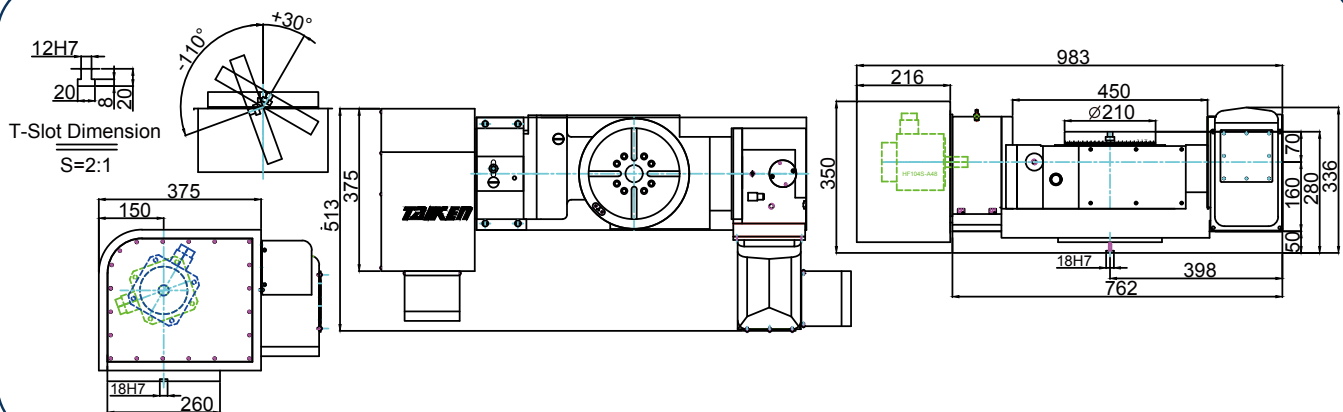
TKFA-170



TKFA-210



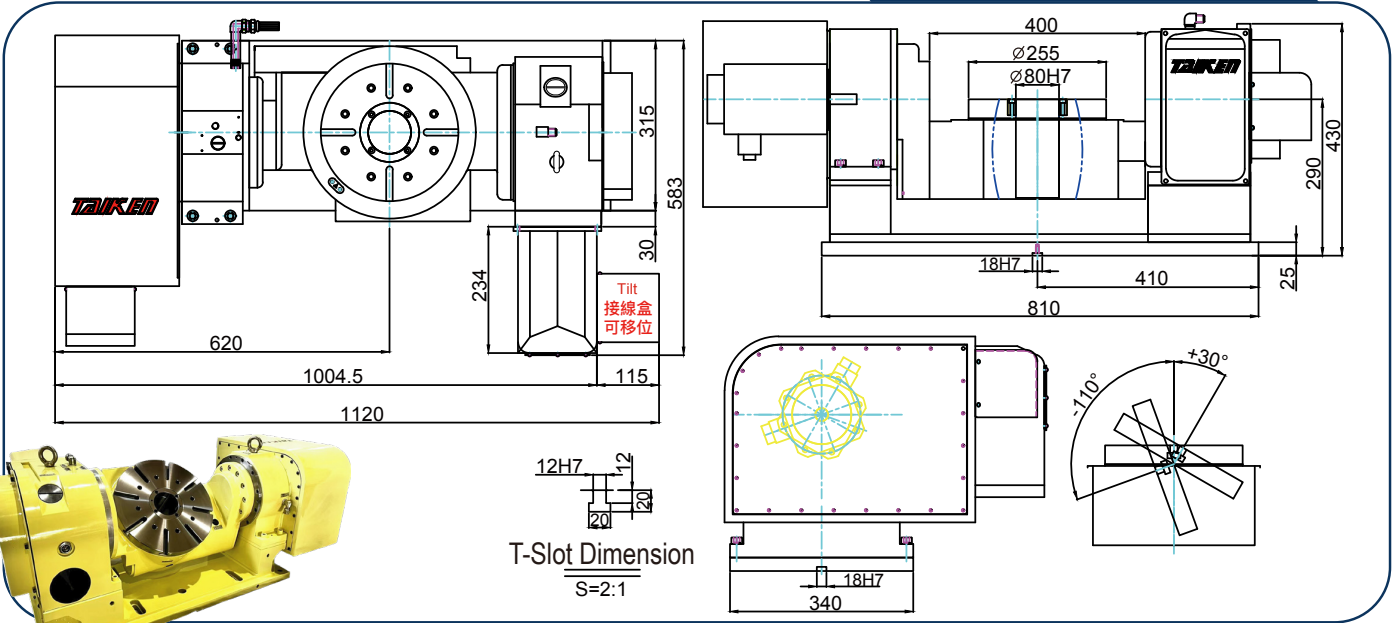
TKFH-210



TCFH SERIES - HYDRAULIC BRAKE

TCFH-255 / TCFH-320 / TCFH-400 / TCFH-500

TCFH - 255

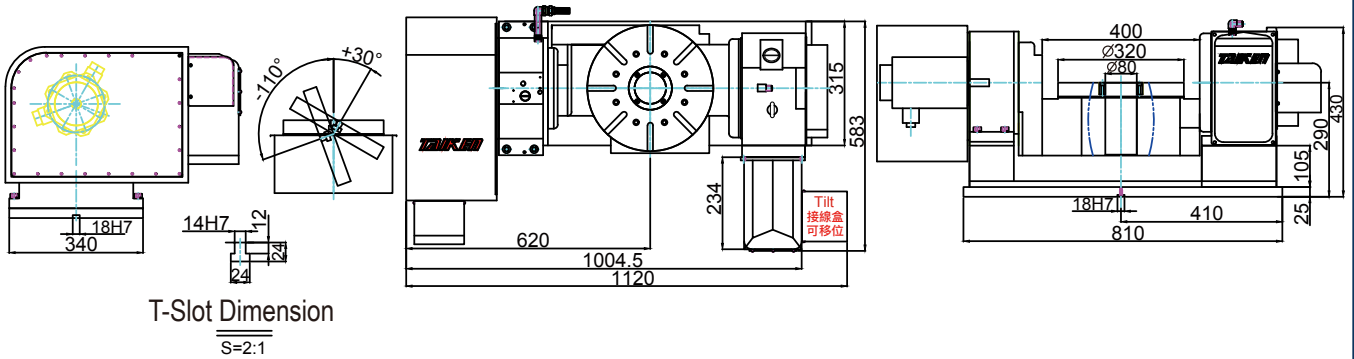


Model		Unit	TCFH-255		TCFH-320		TCFH-400i		TCFH-500i	
Table Diameter		mm	∅255		∅320		∅400		∅500	
Diameter of Table Central Hole		mm	∅110		∅110		∅150		∅150	
Diameter of Canter Through Hole		mm	∅80		∅80		∅120		∅120	
Table Height (Horizontal)		mm	290		290		380		380	
Table T-slot Width		mm	12H7		14H7		14H7		14H7	
Table Height		mm	18h7		18h7		18h7		18h7	
Tilt Range		.deg	+30° ~ -110°		+30° ~ -110°		+30° ~ -110°		+30° ~ -110°	
Axis			Rotation	Tilt	Rotation	Tilt	Rotation	Tilt	Rotation	Tilt
Min. Increment		.deg	0.001	0.001	0.001	0.001	0.001	0.001	0.001	0.001
Indexing Precision		arc.sec.	15	50	15	50	15	50	15	50
Repeatability		arc.sec.	4	8	4	8	4	8	4	8
Clamping System(Hydraulic)		kg/cm	35	35	35	35	35	35	35	35
Clamping Torque		kg-m	70	140	70	140	115	175	115	175
Servo Motor Model	FANUC	Taper shaft	α4i/β8iS	α8i/β12iS	α4i/β8iS	α8i/β12iS	α8i/β12iS	α22i/β22iS	α8i/β12iS	α22i/β22iS
	MITSUBISHI	Straight	HF-104	HF-154	HF-104	HF-154	HF-154	HF-354	HF-154	HF-354
Speed Reduction Ratio		-	1:120	1:120	1:120	1:120	1:120	1:120	1:120	1:120
Max. Rotation Rota of Table (Calculate With FANUC α Motor)		rpm	25	16.6	25	16.6	25	16.6	25	16.6
Allowable Inertia Load Capacity (Horizontal)		kg.cm.sec ²	25.6		25.6		40		40	
Allowable Workpiece Load	Vertical	kg	100		100		200		200	
	Horizontal	kg	75		75		100		100	
Allowable Load (With Rotary Table Clamping)		kgf	1500		1500		1800		1800	
		kgf.m	140		140		175		175	
		kgf.m	70		70		115		115	
Strength of Worm Gears		kg.m	55		55		80		80	
Net Weight (Servo Motor Excluded)		kg	320		350		800		830	

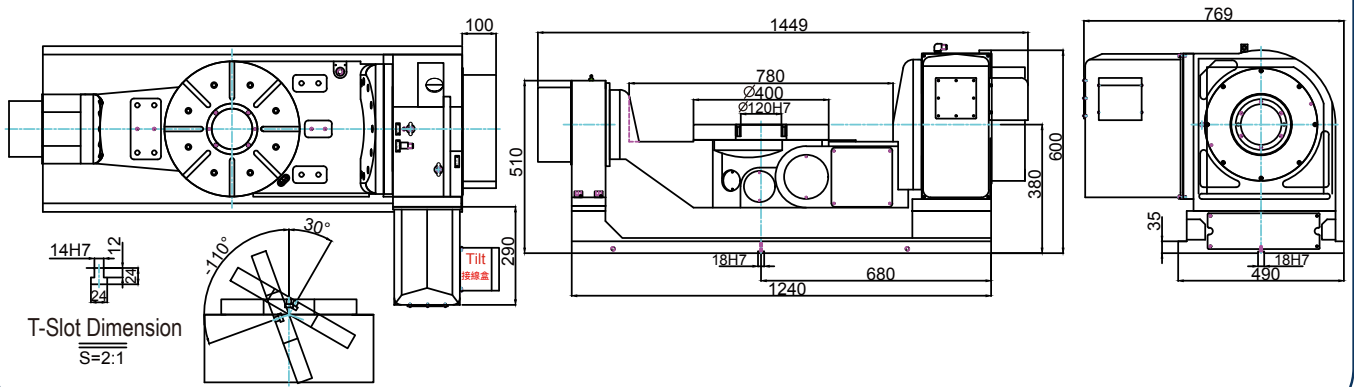
* The specification and design are subject to change without prior notice.

DESCRIPTION

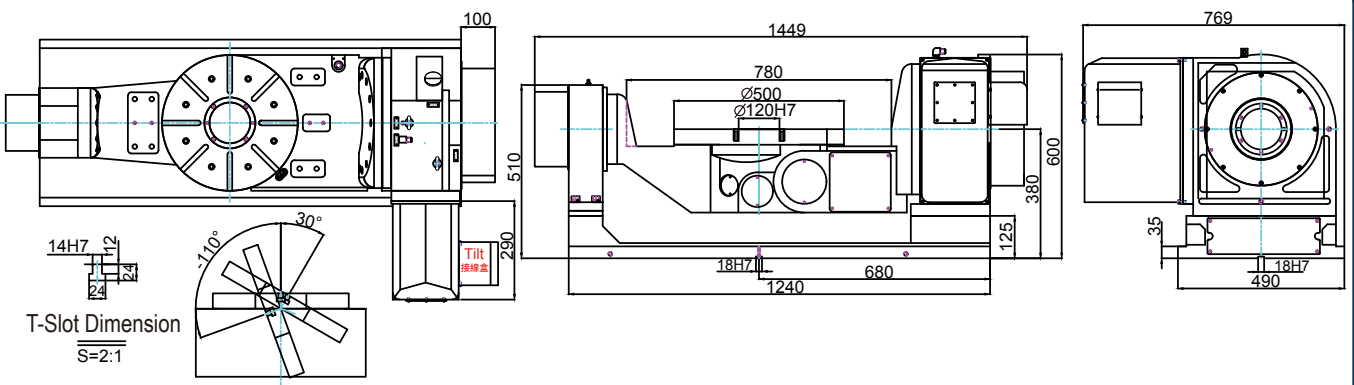
TCFH - 320



TCFH - 400



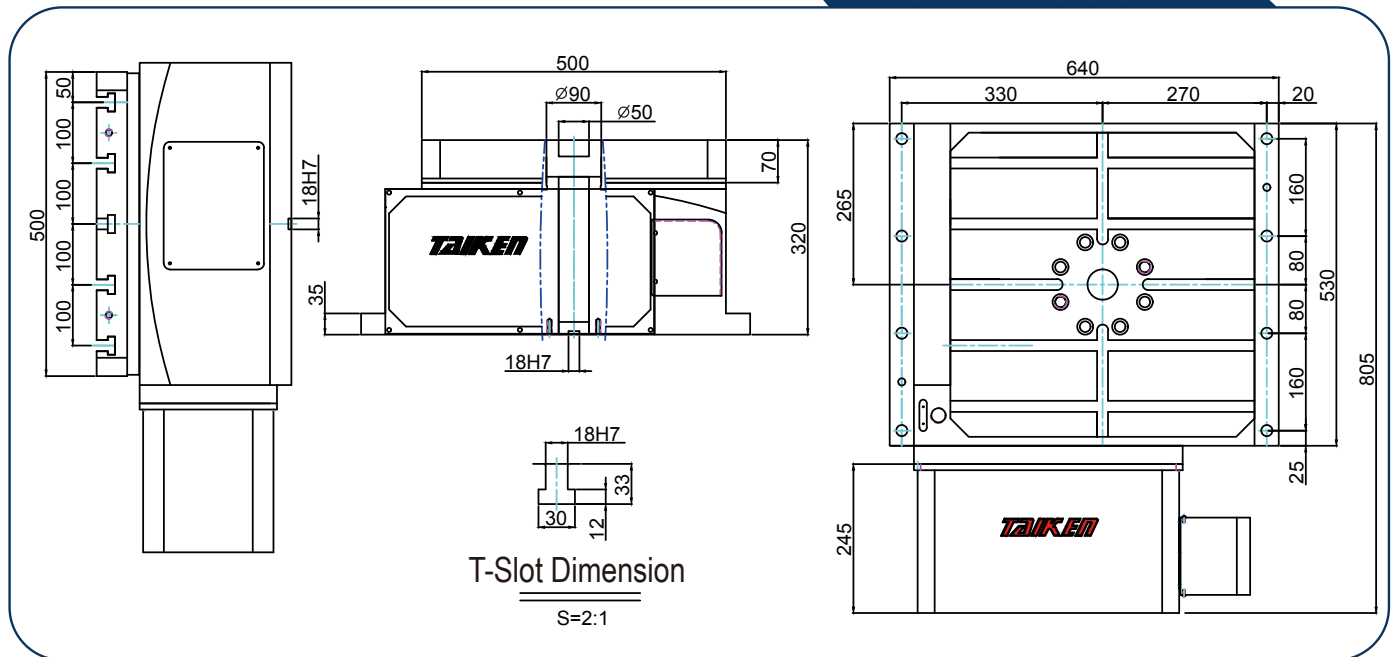
TCFH - 500



CNC HIRTH COUPLING INDEX TABLE CNC (TGH SERIES)

TGH - 500 / TGH - 630 / TGH - 800

TGH - 500

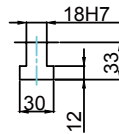
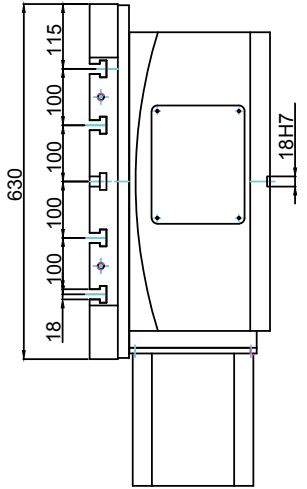
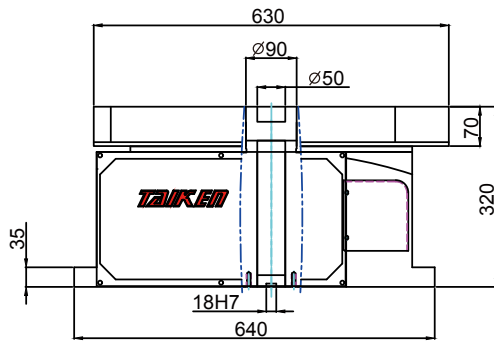
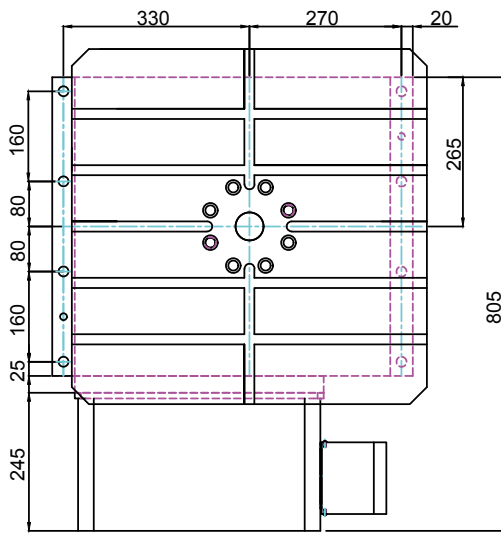


Model	Unit	TCH-500	TCH-630	TCH-800
Table Diameter	mm	500x500	630x630	800x800
Diameter of Table Central Hole	mm	∅50x27	∅50x27	∅50x27
Table Height	mm	320	320	388
Table Height	mm	320	320	388
Table T-slot Width	mm	18H7	18H7	22H7
Guide Block Width	mm	18h7	18h7	18h7
Min. Increment	deg.	1° or 5°	1° or 5°	1° or 5°
Indexing Precision	arc.sec.	±5	±5	±5
Repeatability	arc.sec.	±1	±1	±1
Clamping System(Hydraulic)	kg/cm ²	35	35	35
Clamping Torque	kg-m	1000	1000	9000
Servo Motor Model	FANUC	Taper shaft	α12is/B22is	α12is/B22is
	mitsubishi	Straight	HF-204	HF-204
Speed Reduction Ratio	-	1:180	1:180	1:180
Max. Rotation Rota of Table (Calculat With FANUC α Motor)	rpm	16.6	16.6	11.1
Allowable Workpiece Load (Horizontal)	Horizontal	kg	600	700
		kgf.m	-	-
Strength of Worm Gears	kgf.m	-	-	-
Net Weight (Servo Motor Excluded)	kg	550	590	1100

※ The specification and design are subject to change without prior notice.

DESCRIPTION

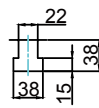
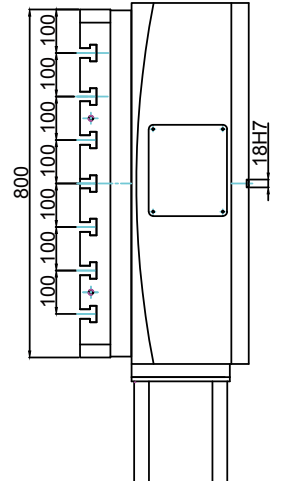
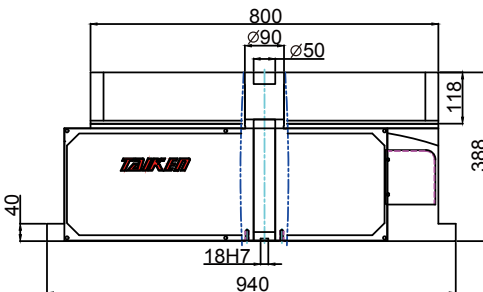
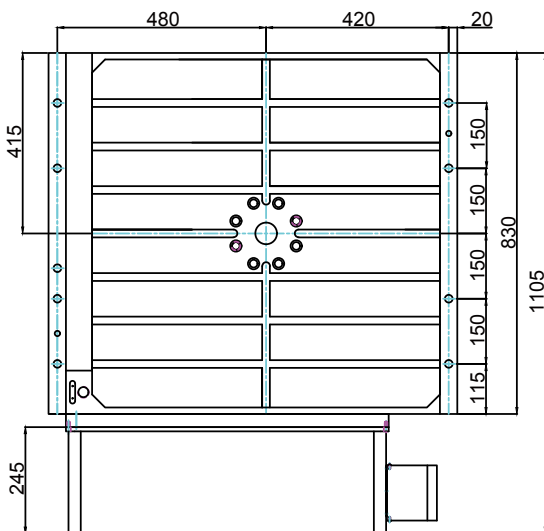
TGH - 630



T-Slot Dimension

S=2:1

TGH - 800

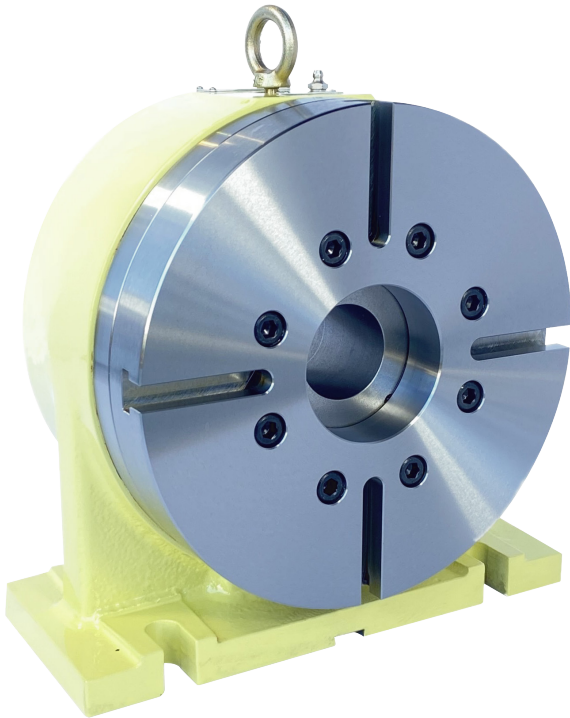


T-Slot Dimension

S=2:1

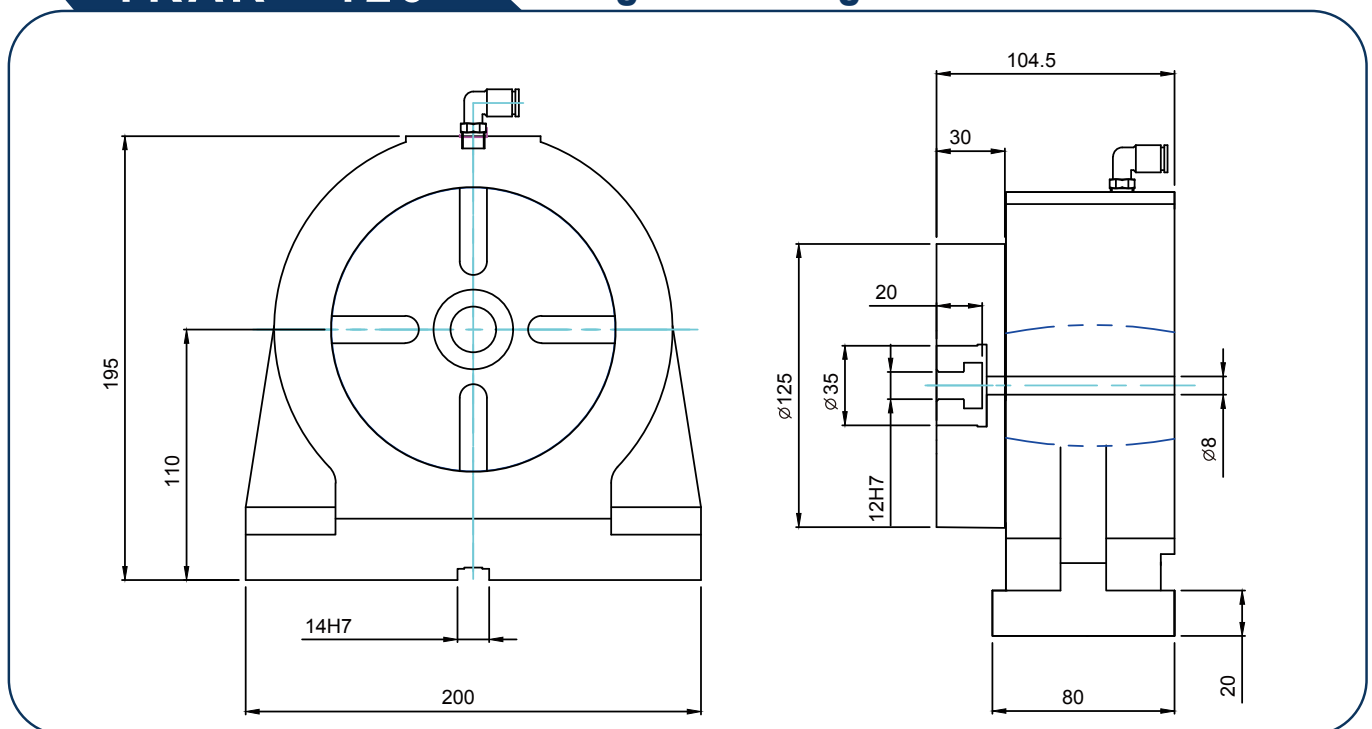
TPAR SERIES - PNEUMATIC ROTARY TAILSTOCK

TKAR - 125 / TPAR - 170 / TPAR - 210



TKAR - 125

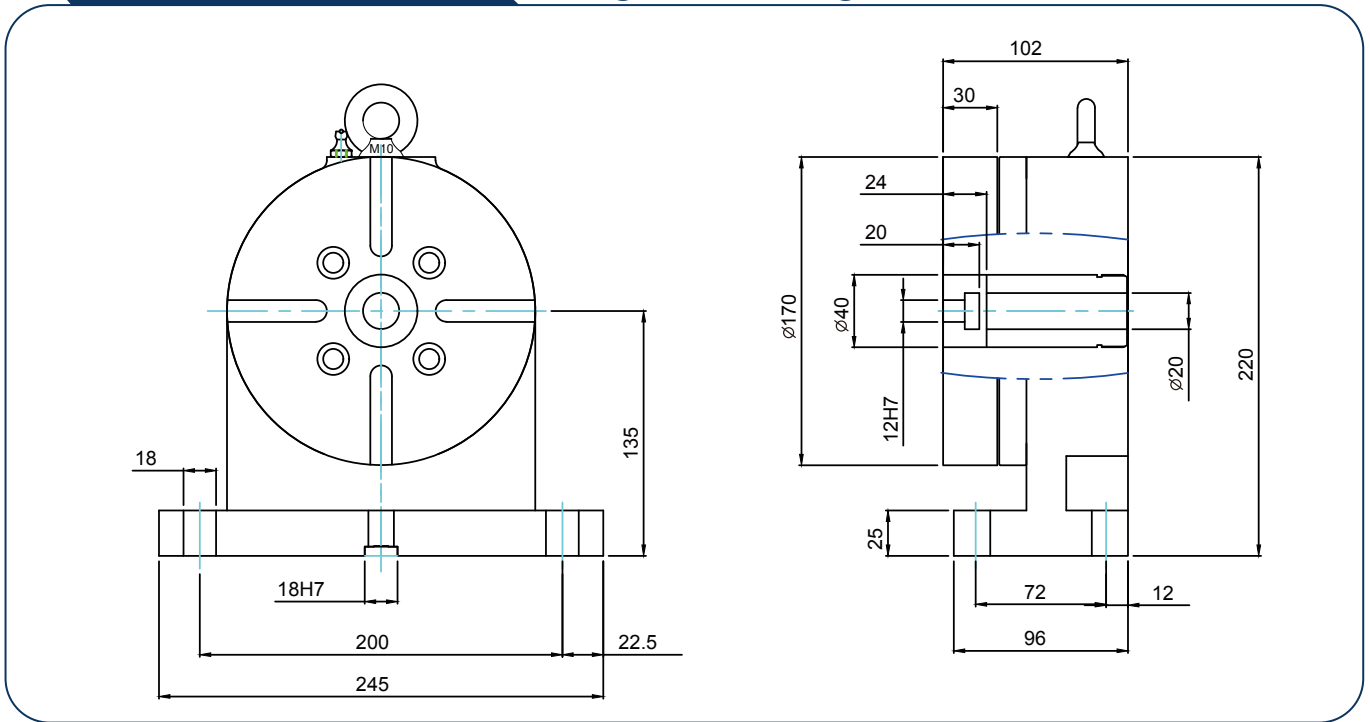
Weight = 16kg



DESCRIPTION

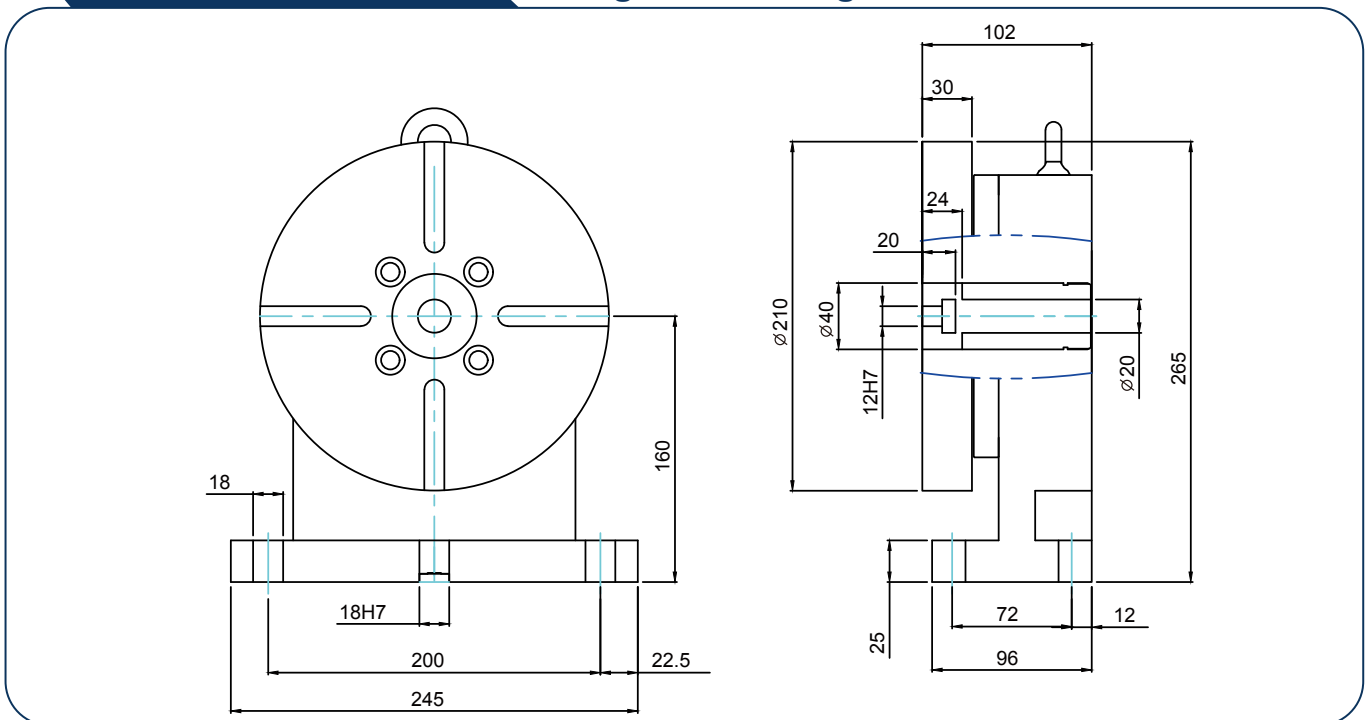
TPAR - 170

Weight = 22kg



TPAR - 210

Weight = 27kg

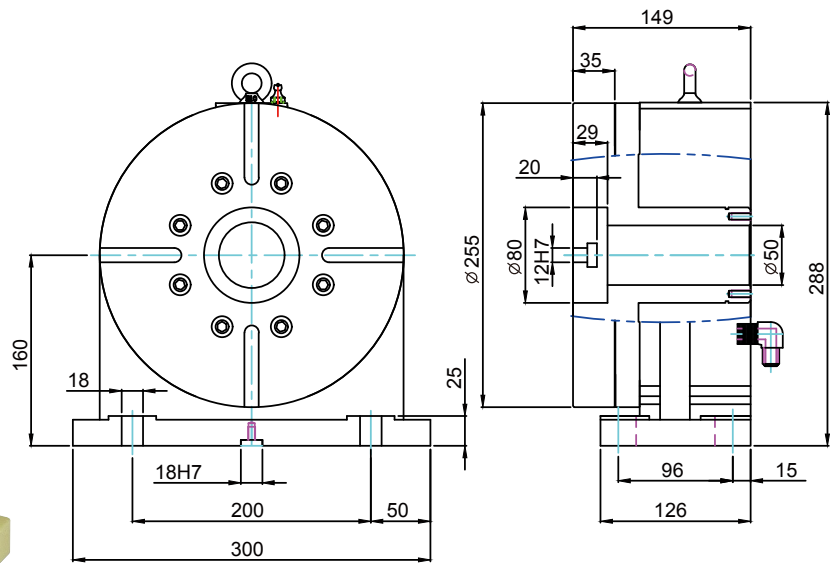
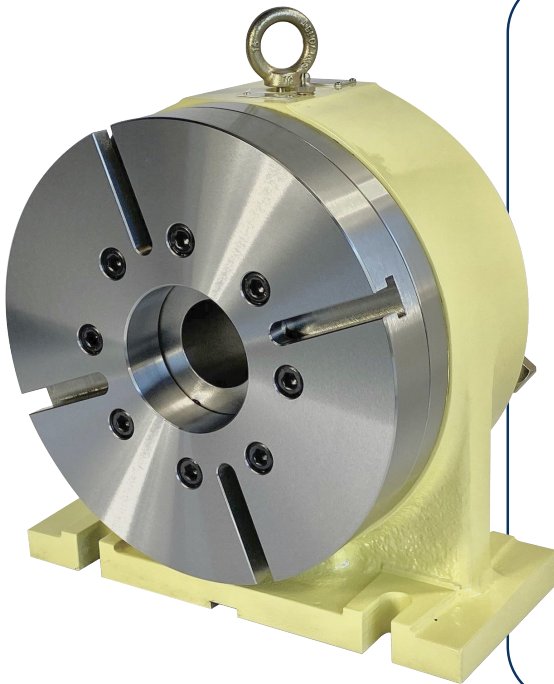


TCHR SERIES - HYDRAULIC ROTARY TAILSTOCK

TPHR-255 / TCHR-320 / TCHR-400 / TCHR-630

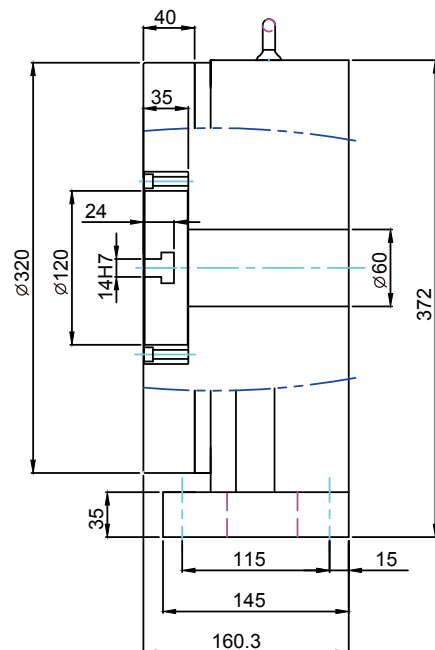
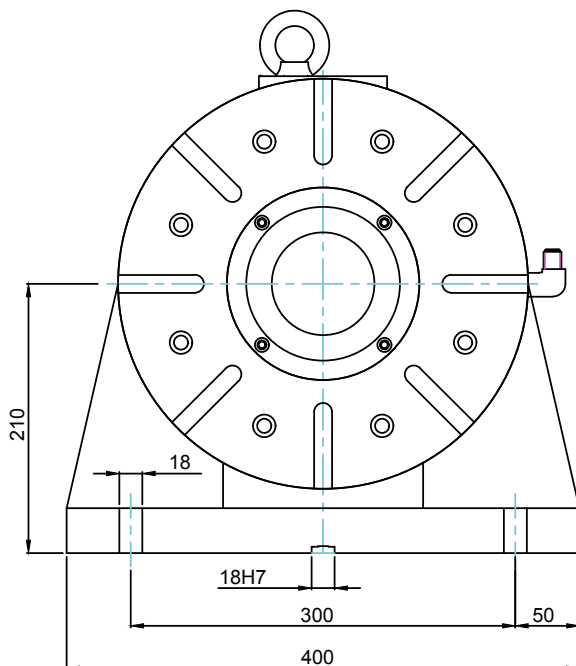
TPHR - 255

Weight = 48kg



TCHR - 320

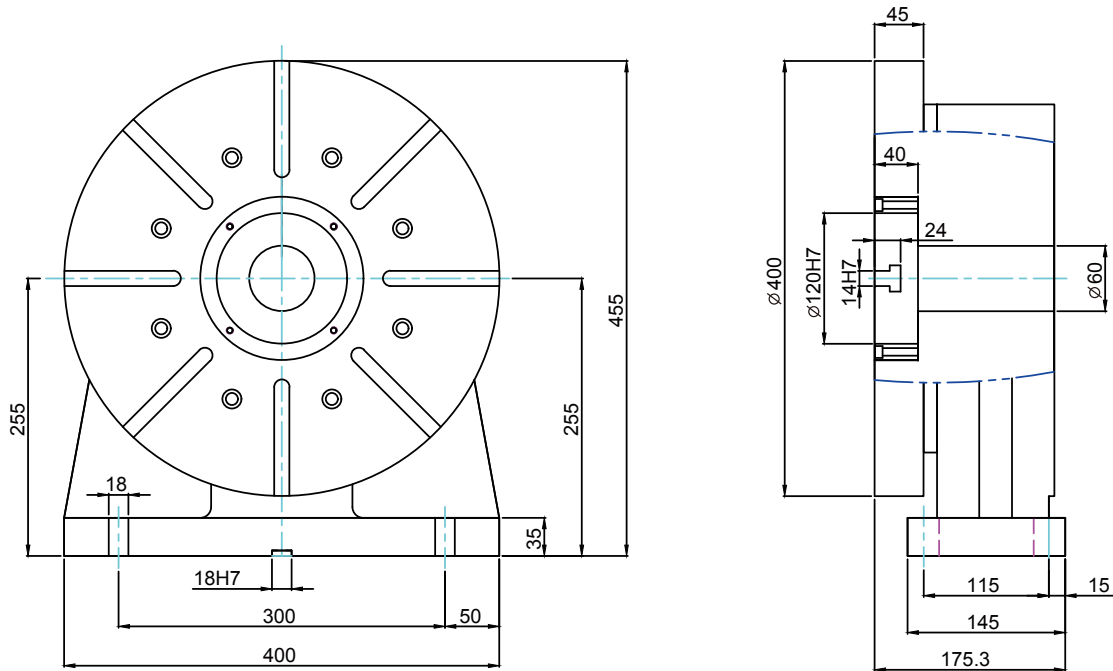
Weight = 99kg



DESCRIPTION

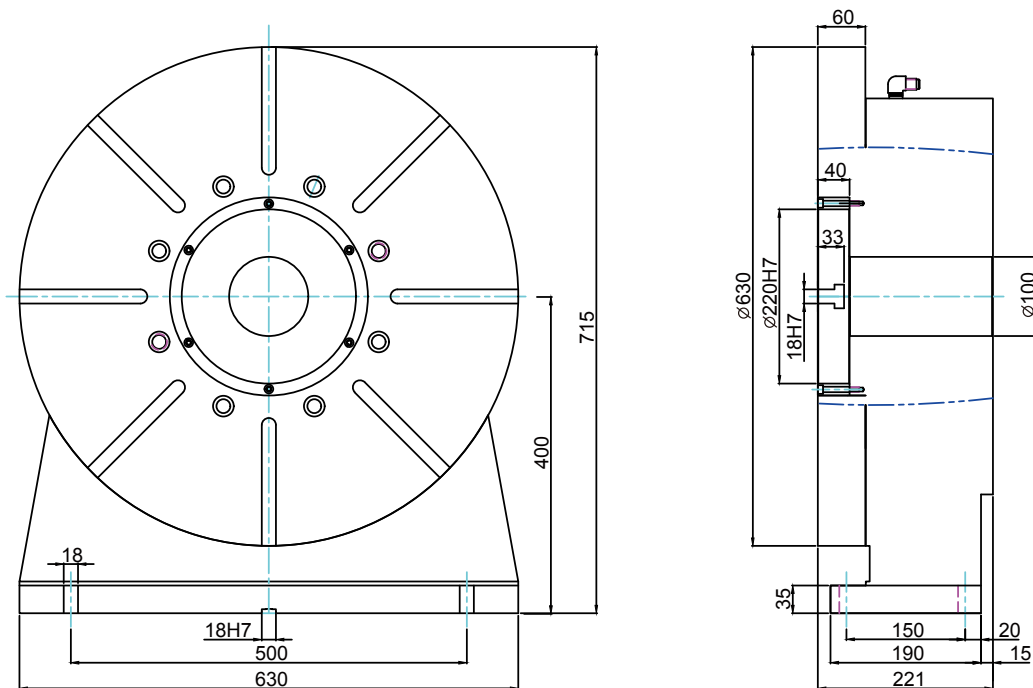
TCHR - 400

Weight = 125kg



TCHR - 630

Weight = 415kg

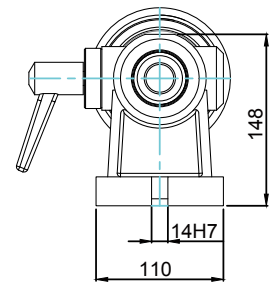
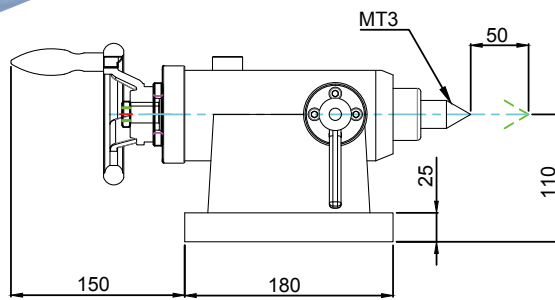
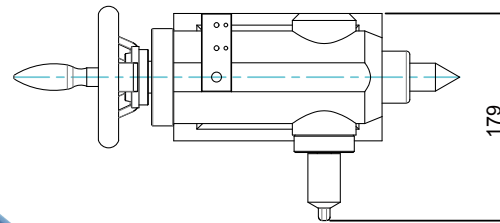
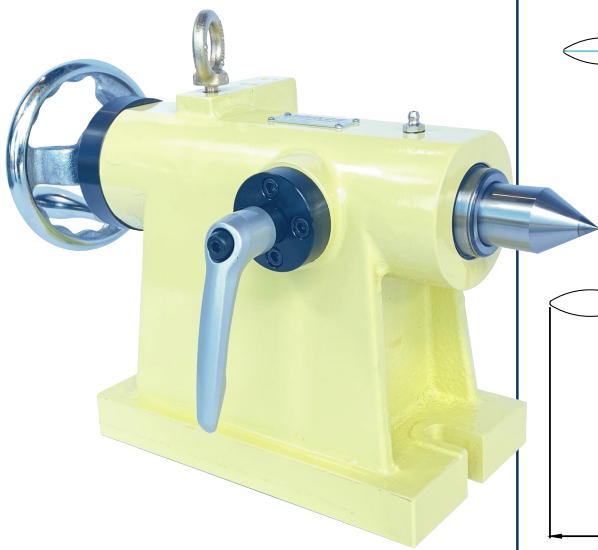


T SERIES - MANUAL TAILSTOCK

TA-110 / TB-135 / TC-160 / TD-210 / TK-310

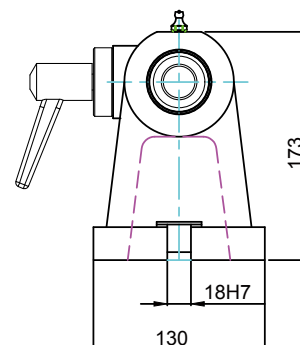
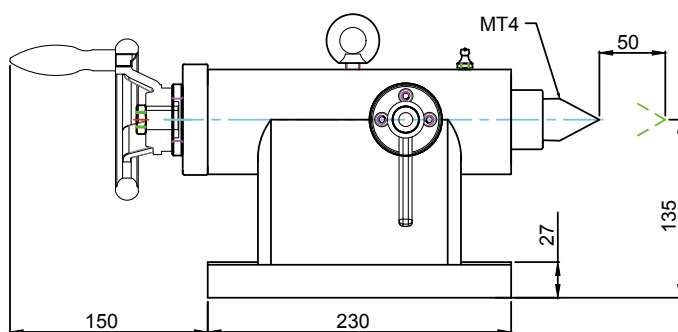
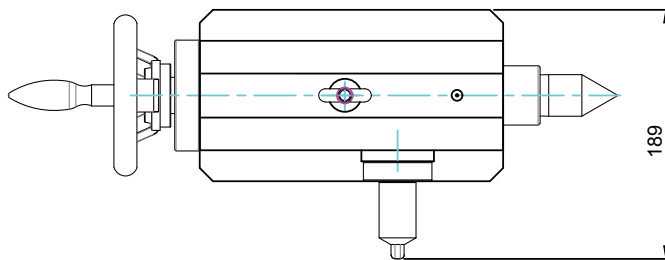
TA - 110

Weight = 16kg



TB - 135

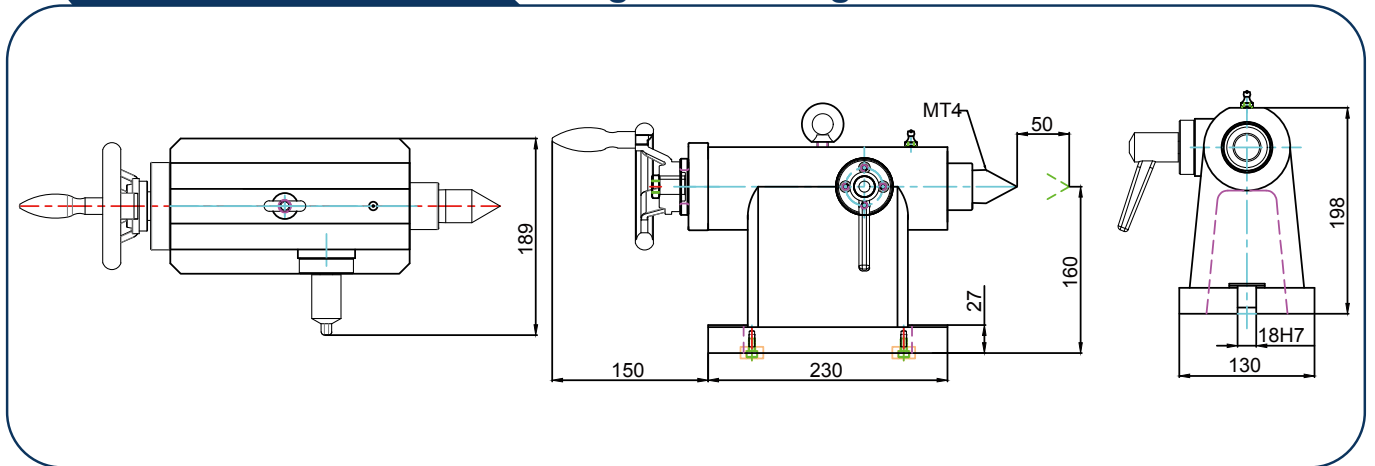
Weight = 18kg



DESCRIPTION

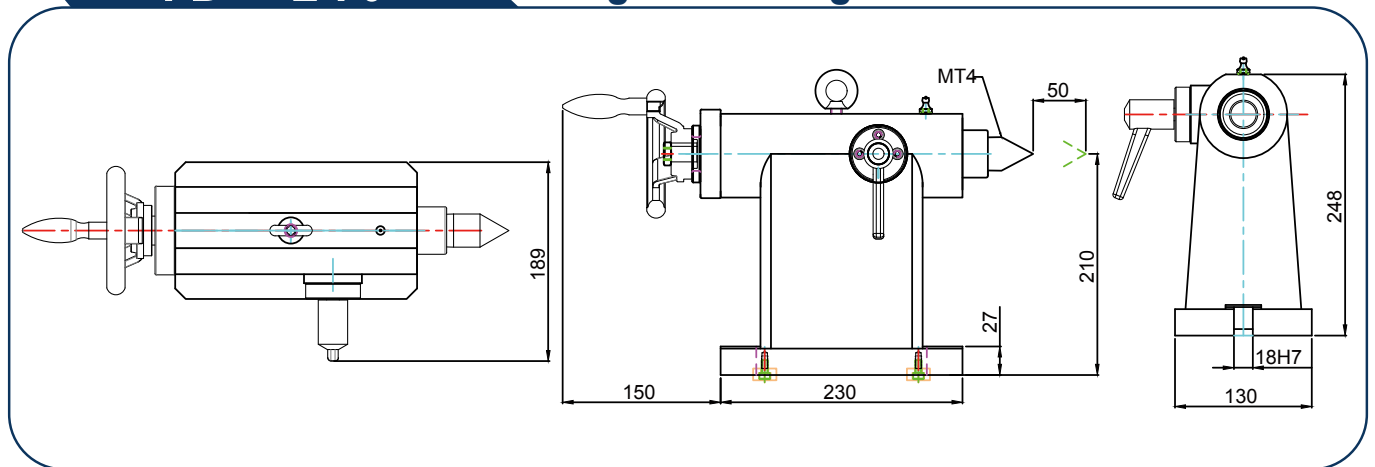
TC - 160

Weight = 21kg



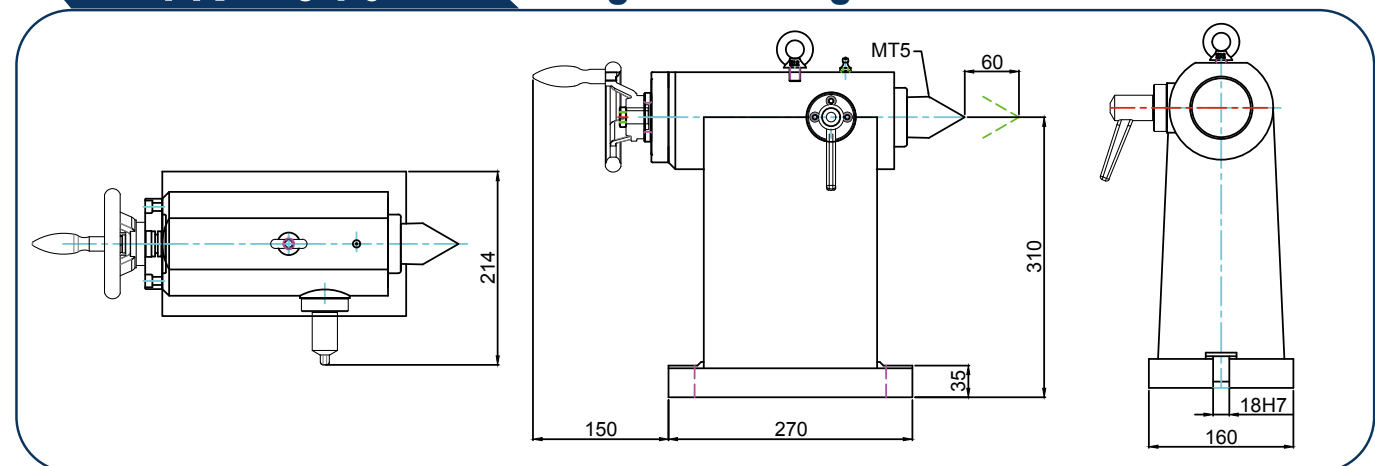
TD - 210

Weight = 25kg



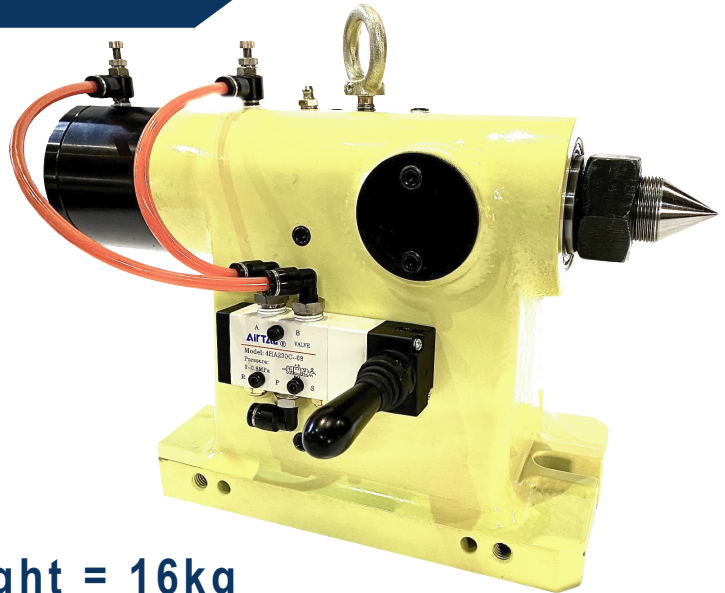
TK - 310

Weight = 52kg



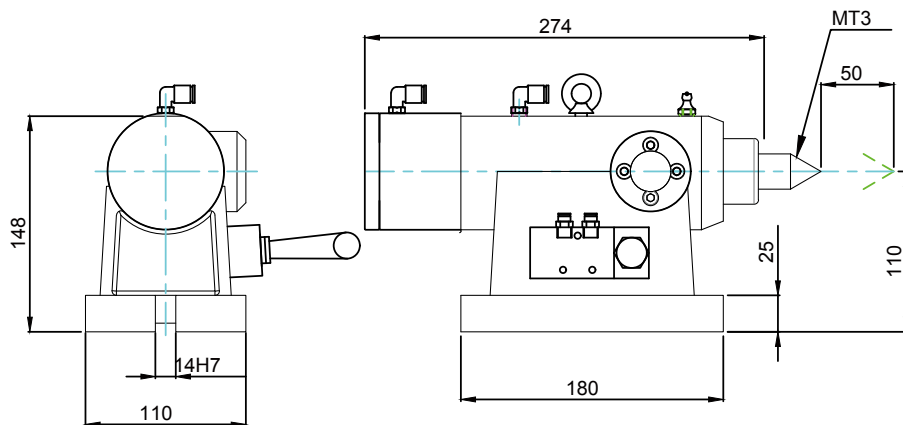
AT SERIES - MANUAL TAILSTOCK WITH PNEUMATIC SWITCHING VALVE

ATF - 110 / ATG - 135



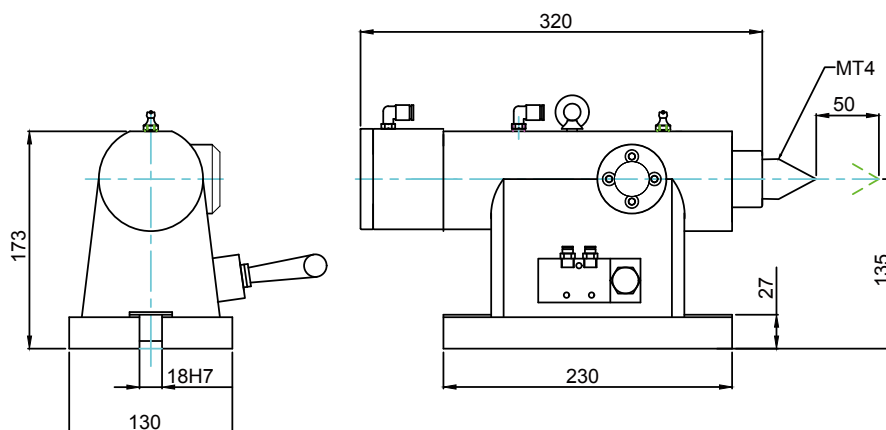
ATF - 110

Weight = 16kg



ATG - 135

Weight = 18kg



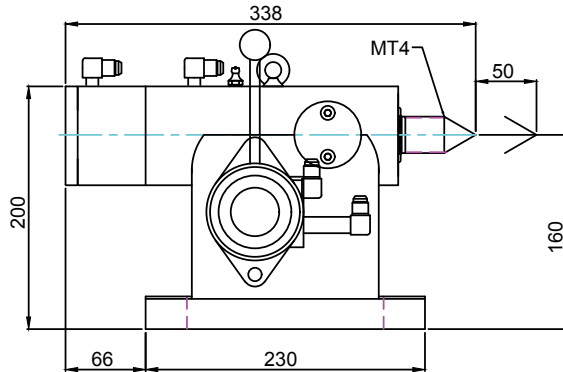
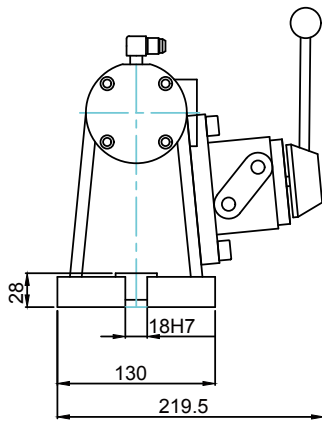
HT SERIES - MANUAL TAILSTOCK WITH HYDRAULIC SWITCHING VALVE

HTC - 160 / HTD - 210



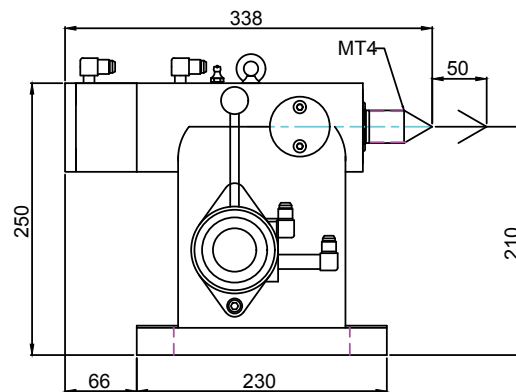
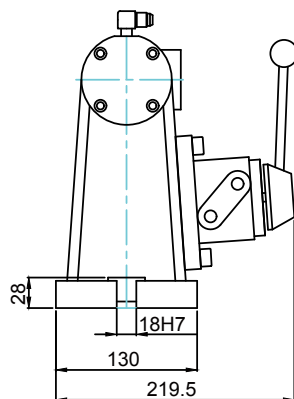
HTC - 160

Weight = 24kg



HTD - 210

Weight = 28kg





Information

TAIKEN Precision Technology co., Ltd

Address : NO,38 Lane276 Guangfu Road, Shanpili ,
Shengang District Taichung City

Tel : +886-4-25632159

Fax : +886-4-25611530

E-mail : taiken.mcn@gmail.com